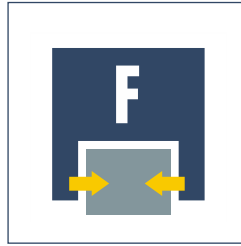




Sizes
801 .. 9010



Weight
0.036 kg .. 1.10 kg



Gripping force
13 N .. 460 N

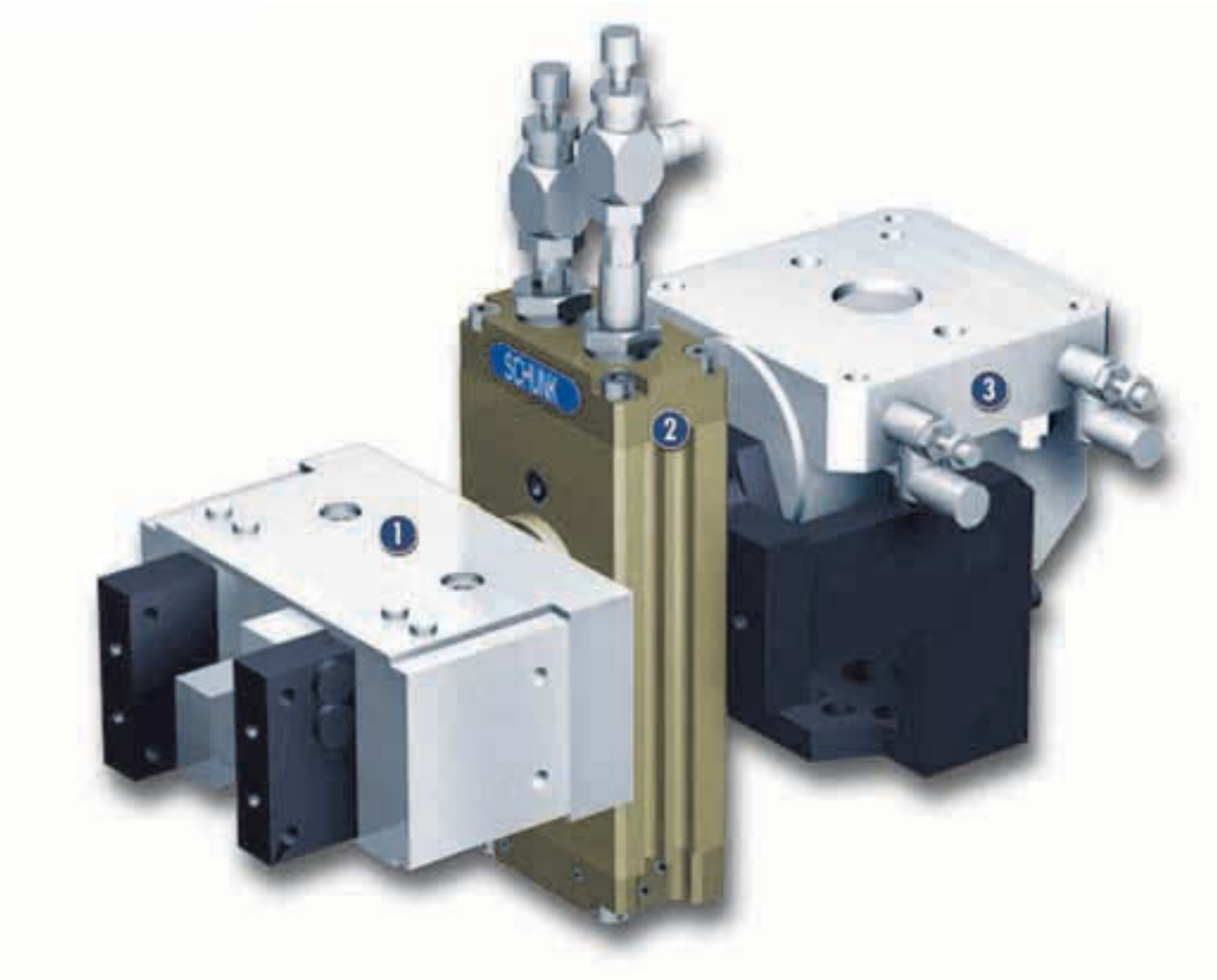


Stroke per finger
2.5 mm .. 40 mm



Workpiece weight
0.065 kg .. 2.30 kg

Application example



Transfer station with simultaneous 90° reorientation of the workpiece in two axes

1 RH 925 Small-component Gripper with short fingers

3 SKE 40 Rotary Actuator

2 MRU 10.2-90-3 Miniature Rotary Actuator for gripper rotation

Grippers for small components

The RH series is a low-price gripping system, which is particularly suitable for light applications.

Area of application

For use in clean environmental conditions (e.g. assembly or packaging zones) with low process forces

Your advantages and benefits

Low-price gripper series

for simple applications with low loads in clean environments

Maintenance-free

with low weight

Excellent price-performance ratio

making it an attractive option for low-budget applications



General information on the series

Working principle

Double-acting pneumatic drive

Housing material

Aluminum/steel

Base jaw material

Aluminum/steel

Actuation

Pneumatic, with filtered compressed air (10 µm): Dry, lubricated or non-lubricated

Pressure medium: Required quality class of compressed air according to DIN ISO

8573-1: Quality class 4

Warranty

24 months

Scope of delivery

Includes small parts for mounting, assembly and operating manual with manufacturer's declaration



Function description

RH grippers work with pneumatic pistons, which produce a synchronized movement due to kinematics that vary depending on the type.

Options and special information

In order to keep the manufacturing costs and thus the sale prices low, the RH series offers a simple design. Therefore, repairs are generally not economically feasible.

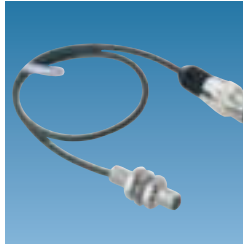
Accessories

SCHUNK accessories — the suitable complement for the highest level of functionality, reliability and controlled production of all automation modules.

Fittings



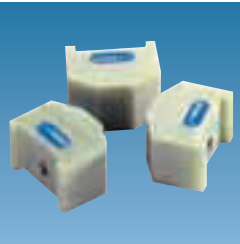
IN inductive proximity switches



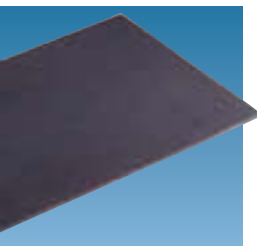
W/WK/KV/GK sensor cables



Quentes plastic inserts



HKI gripper pads



SDV-P pressure maintenance valves



① For the exact size of the required accessories, availability of this size and the designation and ID, please refer to the additional views at the end of the size in question. You can find more detailed information on our accessory range in the "Accessories" catalog section.

General information on the series

Gripping force

is the arithmetic total of the gripping force applied to each base jaw at distance P (see illustration), measured from the upper edge of the gripper.

Gripping moment

is the arithmetic total of gripping moments for each base jaw.

Finger length

is measured from the upper edge of the gripper housing in the direction of the main axis.

Repeat accuracy

is defined as the spread of the limit position after 100 consecutive strokes.

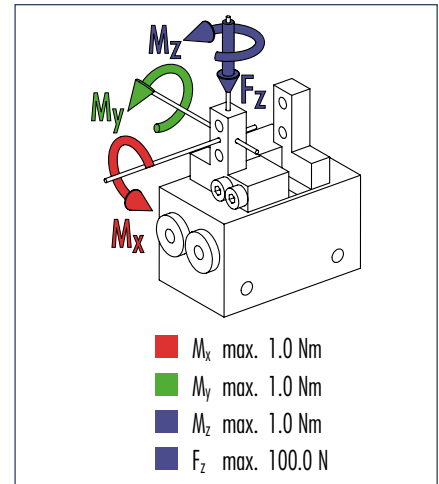
Workpiece weight

The recommended workpiece weight is calculated for a force-type connection with a coefficient of friction of 0.1 and a safety factor of 2 against slippage of the workpiece on acceleration due to gravity g. Considerably heavier workpiece weights are permitted with form-fit gripping.

Closing and opening times

Closing and opening times are purely the times that the base jaws or fingers are in motion. Valve switching times, hose filling times or PLC reaction times are not included in the above times and must be taken into consideration when determining cycle times.

Finger load



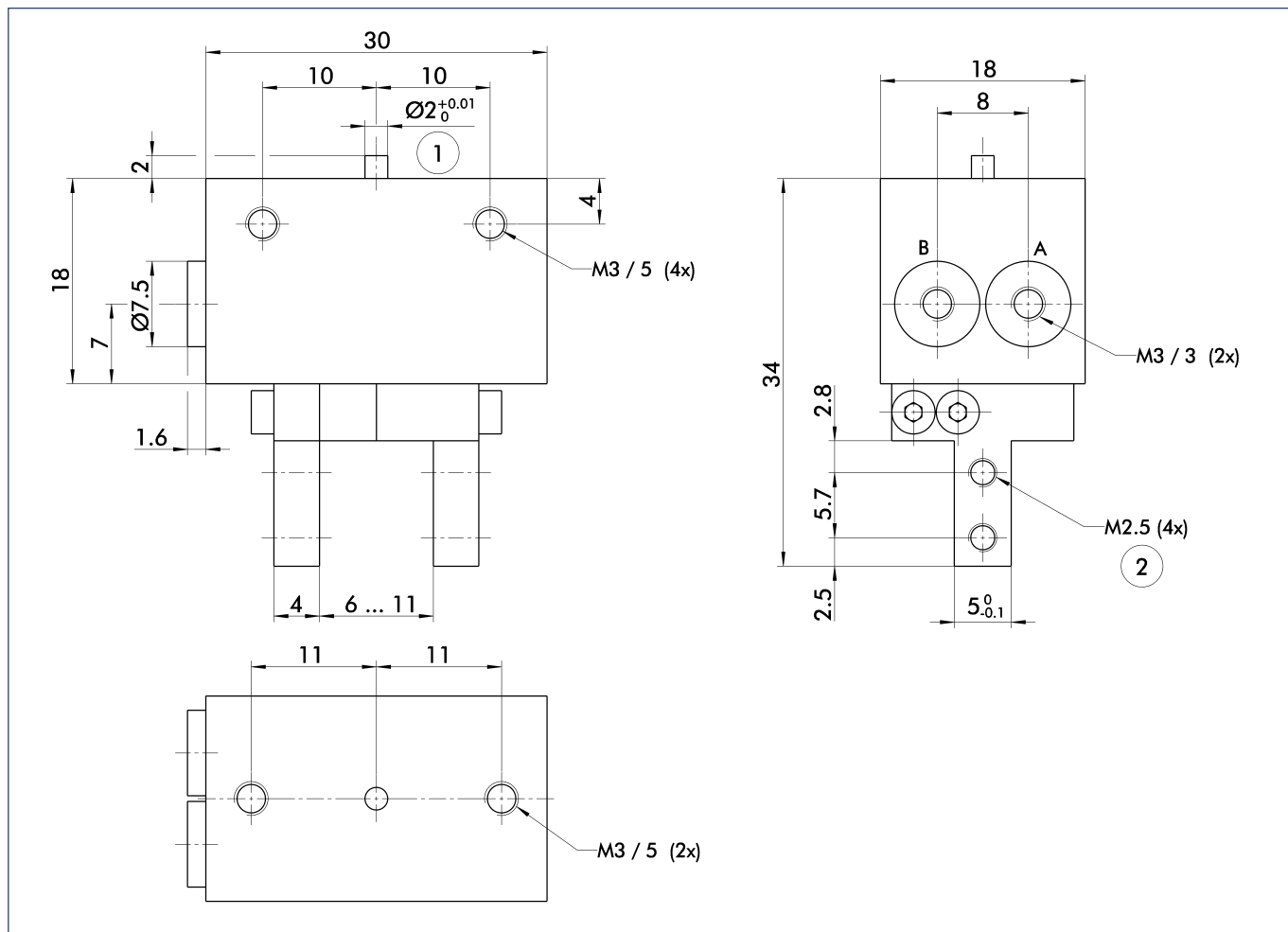
① Moments and forces apply per base jaw and may occur simultaneously. M_y may arise in addition to the moment generated by the gripping force itself. If the max. permitted finger weight is exceeded, it is imperative to throttle the air pressure so that the jaw movement occurs without any hitting or bouncing. Service life may be reduced.



Technical data

Description		RH 901K	RH 901K-FS OC 5	RH 901K-FS OT 5	RH 901K-FS TC 5
	ID	0360131	0360132	0360133	0360134
Stroke per finger	[mm]	2.5	2.5	2.5	2.5
Closing force	[N]	13.0	13.0	13.0	13.0
Opening force	[N]	13.0	13.0	13.0	13.0
Weight	[kg]	0.036	0.036	0.036	0.036
Recommended workpiece weight	[kg]	0.065	0.065	0.065	0.065
Air consumption per double stroke	[cm ³]	1.0	1.0	1.0	1.0
Nominal pressure	[bar]	6.0	6.0	6.0	6.0
Minimum pressure	[bar]	2.0	2.0	2.0	2.0
Maximum pressure	[bar]	7.0	7.0	7.0	7.0
Closing time	[s]	0.06	0.06	0.06	0.06
Opening time	[s]	0.06	0.06	0.06	0.06
Max. permitted finger length	[mm]	35.0	35.0	35.0	35.0
Max. permitted weight per finger	[kg]	0.02	0.02	0.02	0.02
IP rating		30	30	30	30
Min. ambient temperature	[°C]	5.0	5.0	5.0	5.0
Max. ambient temperature	[°C]	60.0	60.0	60.0	60.0
Repeat accuracy	[mm]	0.01	0.01	0.01	0.01

Main views

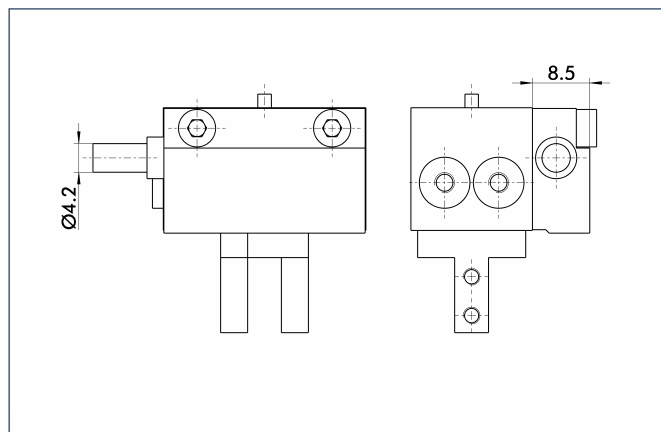


The drawing shows the gripper in the basic version with open jaws, the dimensions do not include the options described below.

① The SDV-P pressure maintenance valve can be used as a gripping force safety device (see "Accessories" catalog section).

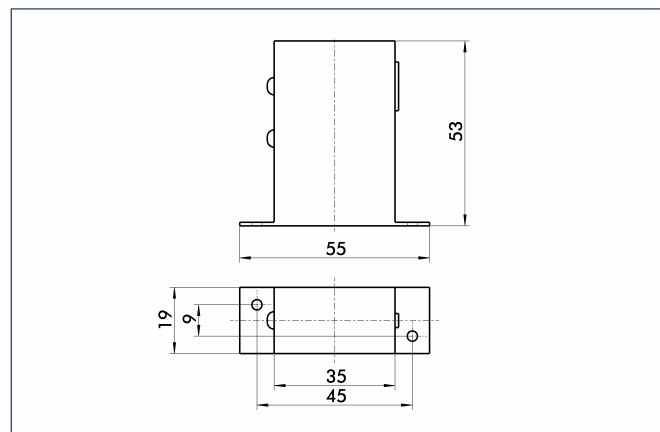
- A,a Main/direct connection, gripper opening
- B,b Main/direct connection, gripper closing
- ① Gripper connection
- ② Finger connection

Micro-photosensor



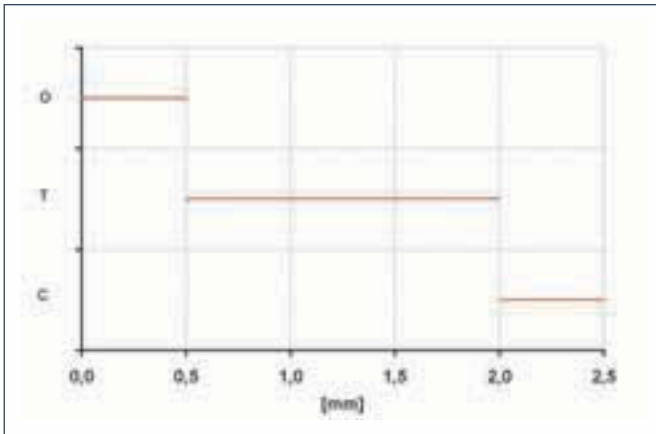
Grippers with integrated photosensor (FS) display two of three positions. (O = open, T = gripped, C = closed)

Amplifier



Dimensions of the amplifier for the photosensor (FS). The amplifier is included in the scope of delivery of FS grippers.

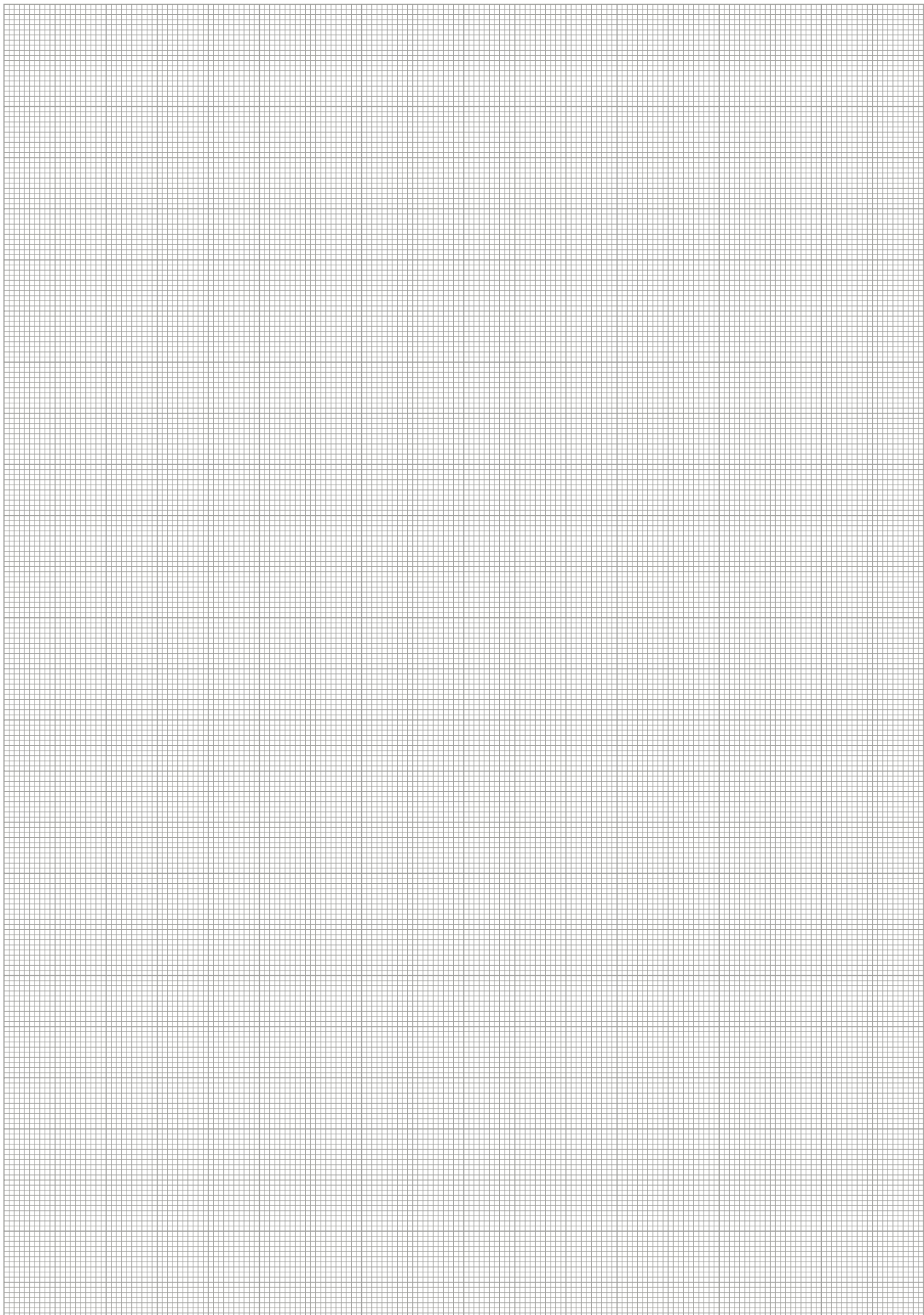
Monitoring positions



Sensor switching characteristics



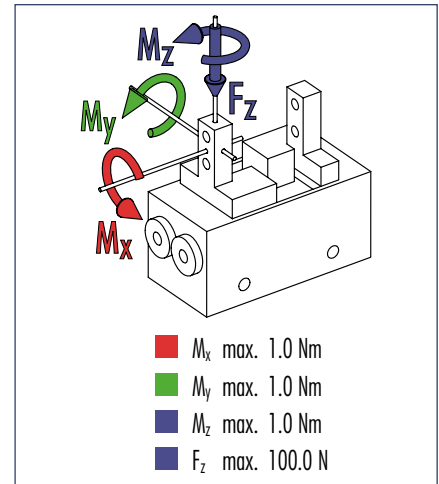
You can find more detailed information and individual parts of the above-mentioned accessories in the "Accessories" catalog section.



RH 901K ST10

Pneumatic · 2-Finger Parallel Grippers · **Grippers for Small Components**

Finger load



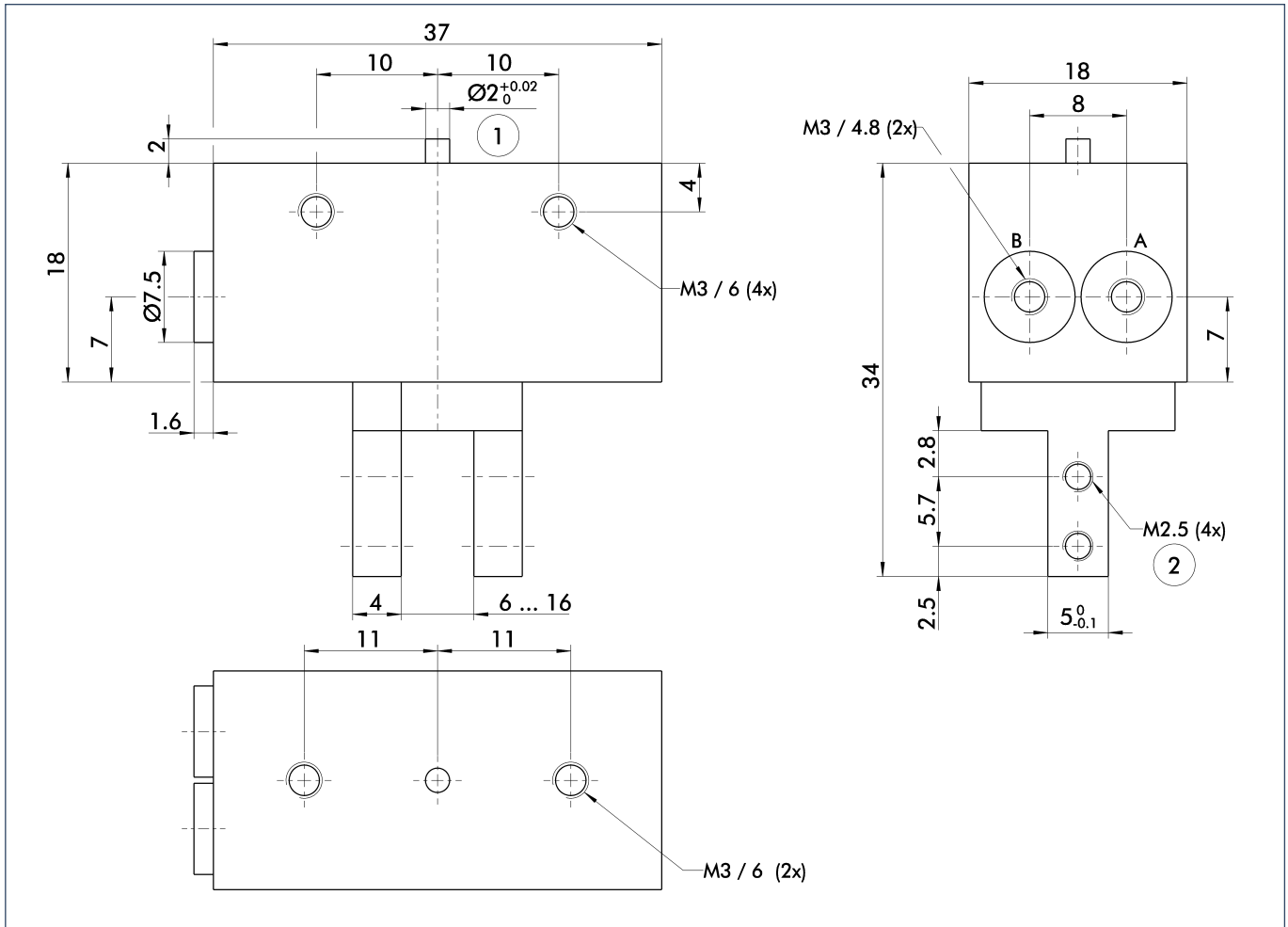
① Moments and forces apply per base jaw and may occur simultaneously. M_y may arise in addition to the moment generated by the gripping force itself. If the max. permitted finger weight is exceeded, it is imperative to throttle the air pressure so that the jaw movement occurs without any hitting or bouncing. Service life may be reduced.



Technical data

Description	RH 901K-ST10		RH 901K-ST10-FS OC 5		RH 901K-ST10-FS OT 5		RH 901K-ST10-FS TC 5	
	ID	0360164	0360166	0360166	0360167	0360167	0360168	0360168
Stroke per finger	[mm]	5.0	5.0	5.0	5.0	5.0	5.0	5.0
Closing force	[N]	13.0	13.0	13.0	13.0	13.0	13.0	13.0
Opening force	[N]	13.0	13.0	13.0	13.0	13.0	13.0	13.0
Weight	[kg]	0.04	0.04	0.04	0.04	0.04	0.04	0.04
Recommended workpiece weight	[kg]	0.065	0.065	0.065	0.065	0.065	0.065	0.065
Air consumption per double stroke	[cm ³]	1.0	1.0	1.0	1.0	1.0	1.0	1.0
Nominal pressure	[bar]	6.0	6.0	6.0	6.0	6.0	6.0	6.0
Minimum pressure	[bar]	2.0	2.0	2.0	2.0	2.0	2.0	2.0
Maximum pressure	[bar]	7.0	7.0	7.0	7.0	7.0	7.0	7.0
Closing time	[s]	0.13	0.13	0.13	0.13	0.13	0.13	0.13
Opening time	[s]	0.13	0.13	0.13	0.13	0.13	0.13	0.13
Max. permitted finger length	[mm]	35.0	35.0	35.0	35.0	35.0	35.0	35.0
Max. permitted weight per finger	[kg]	0.02	0.02	0.02	0.02	0.02	0.02	0.02
IP rating		30	30	30	30	30	30	30
Min. ambient temperature	[°C]	5.0	5.0	5.0	5.0	5.0	5.0	5.0
Max. ambient temperature	[°C]	60.0	60.0	60.0	60.0	60.0	60.0	60.0
Repeat accuracy	[mm]	0.01	0.01	0.01	0.01	0.01	0.01	0.01

Main views

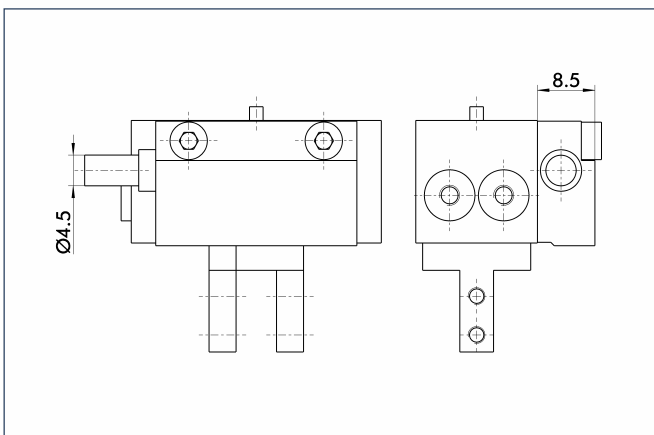


The drawing shows the gripper in the basic version with closed jaws, the dimensions do not include the options described below.

- A,a Main/direct connection, gripper opening
- B,b Main/direct connection, gripper closing
- ① Gripper connection
- ② Finger connection

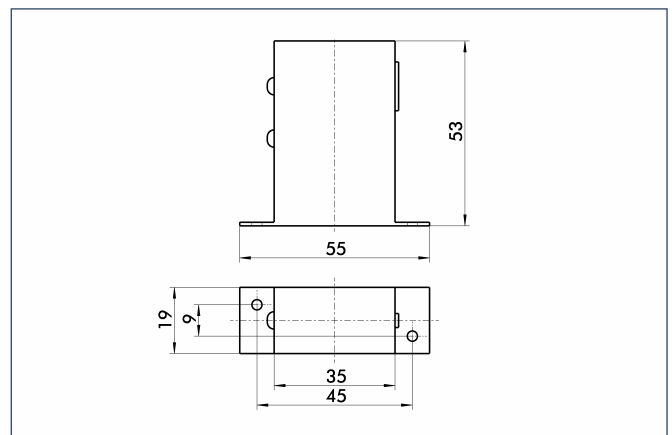
① The SDV-P pressure maintenance valve can be used as a gripping force safety device (see "Accessories" catalog section).

Micro-photosensor



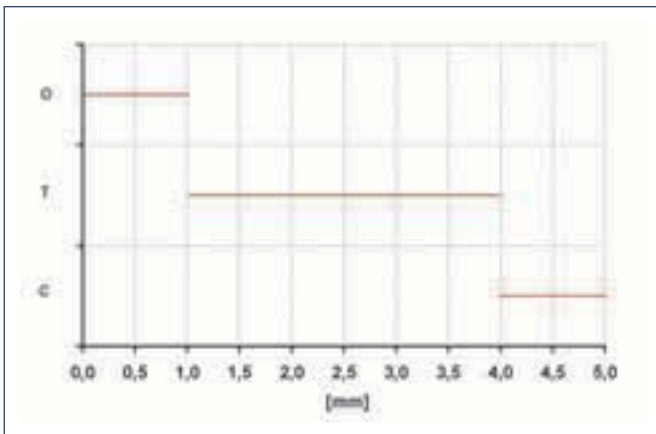
Grippers with integrated photosensor (FS) display two of three positions. (O = open, T = gripped, C = closed)

Amplifier

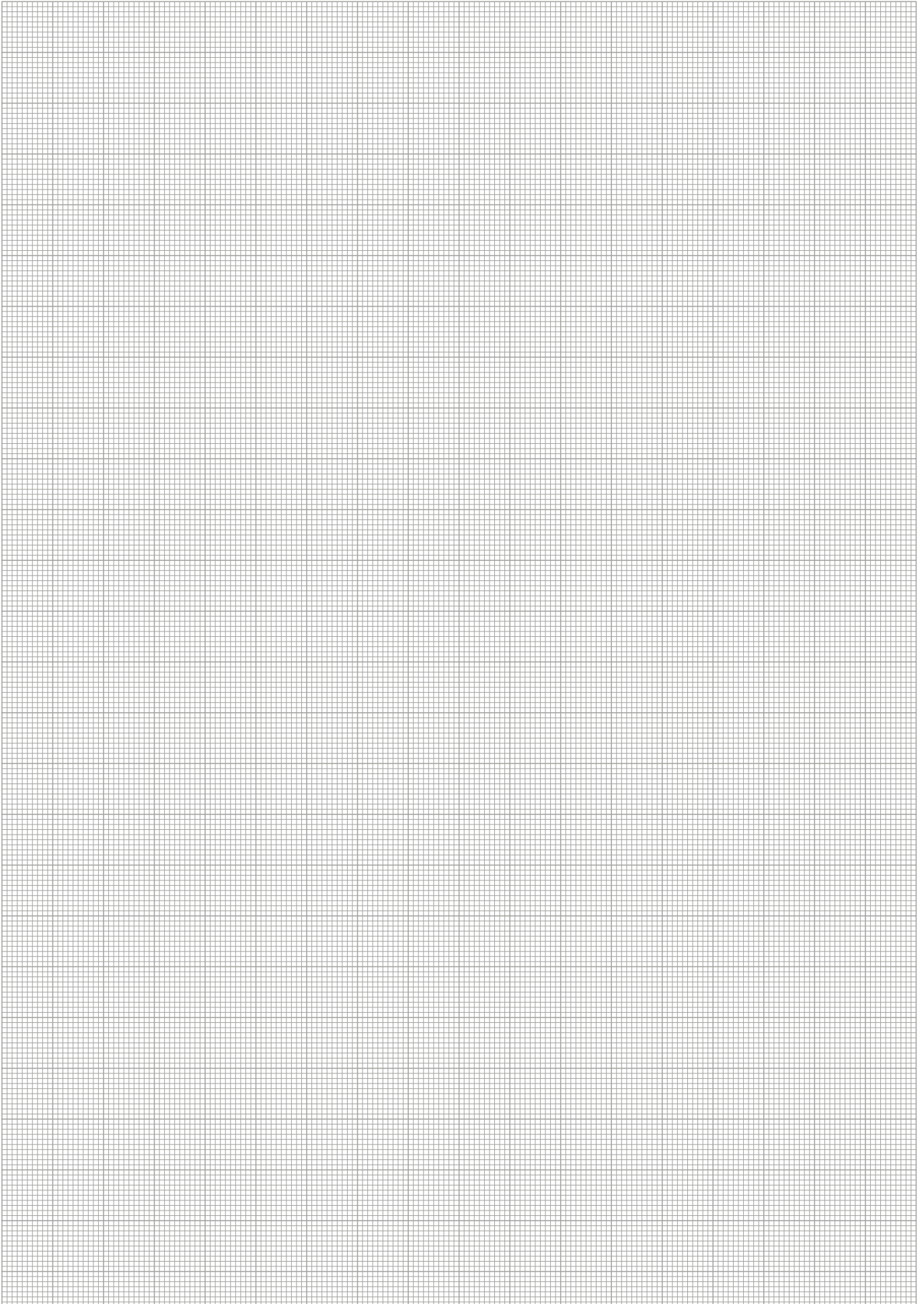


Dimensions of the amplifier for the photosensor (FS). The amplifier is included in the scope of delivery of FS grippers.

Monitoring positions

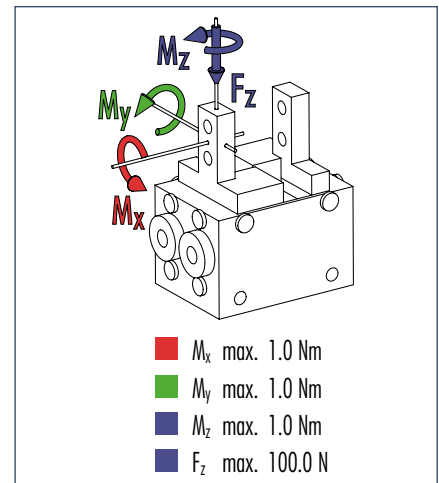


Sensor switching characteristics





Finger load

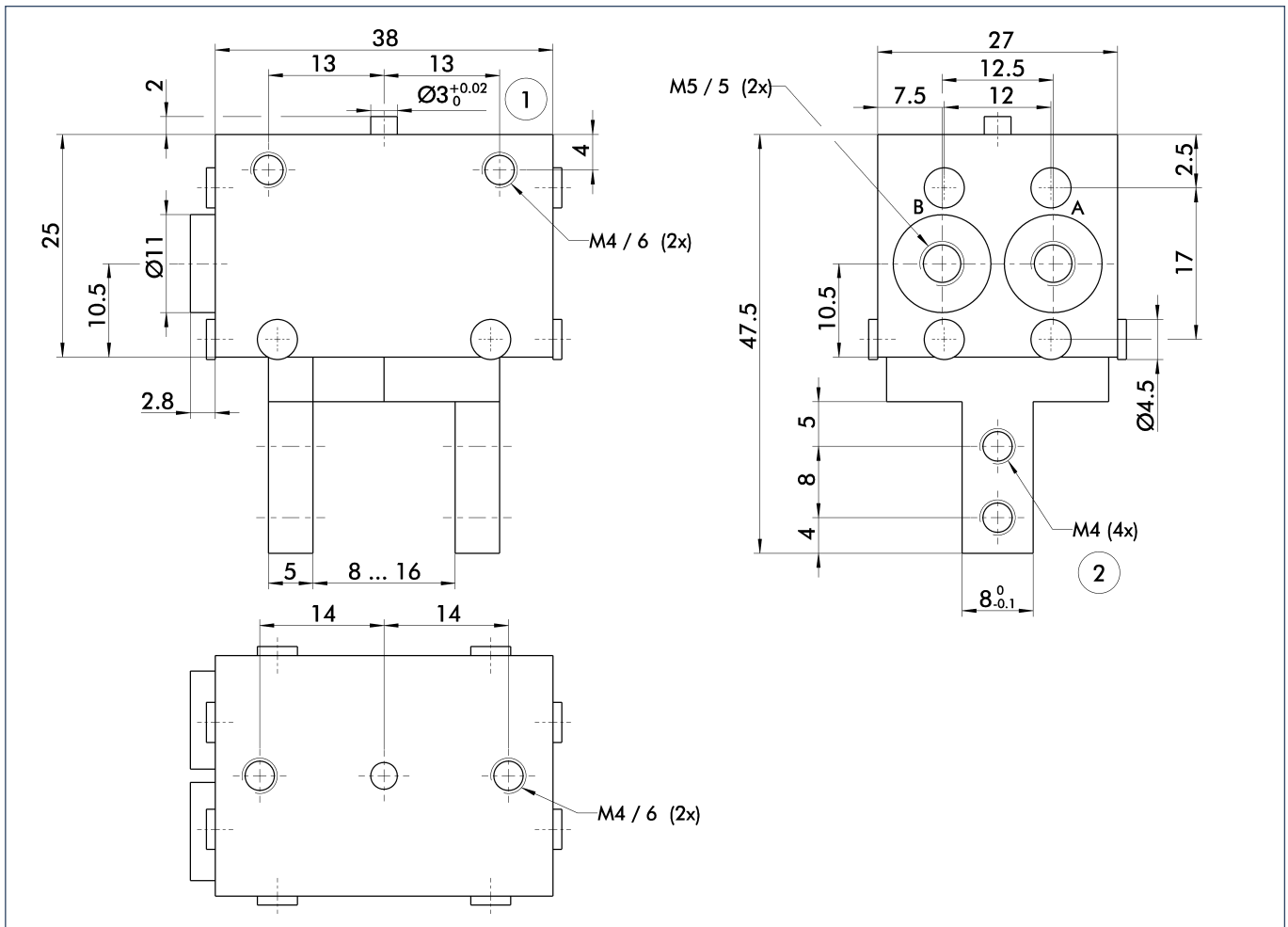


① Moments and forces apply per base jaw and may occur simultaneously. M_y may arise in addition to the moment generated by the gripping force itself. If the max. permitted finger weight is exceeded, it is imperative to throttle the air pressure so that the jaw movement occurs without any hitting or bouncing. Service life may be reduced.

Technical data

Description		RH 905	RH 905-FS TC 5	RH 905-FS OC 5	RH 905-FS OT 5
	ID	0360110	0360259	0360257	0360258
Stroke per finger	[mm]	4.0	4.0	4.0	4.0
Closing force	[N]	44.0	44.0	44.0	44.0
Opening force	[N]	44.0	44.0	44.0	44.0
Weight	[kg]	0.093	0.093	0.093	0.093
Recommended workpiece weight	[kg]	0.22	0.22	0.22	0.22
Air consumption per double stroke	[cm ³]	1.0	1.0	1.0	1.0
Nominal pressure	[bar]	6.0	6.0	6.0	6.0
Minimum pressure	[bar]	2.0	2.0	2.0	2.0
Maximum pressure	[bar]	7.0	7.0	7.0	7.0
Closing time	[s]	0.13	0.13	0.13	0.13
Opening time	[s]	0.13	0.13	0.13	0.13
Max. permitted finger length	[mm]	35.0	35.0	35.0	35.0
Max. permitted weight per finger	[kg]	0.04	0.04	0.04	0.04
IP rating		30	30	30	30
Min. ambient temperature	[°C]	5.0	5.0	5.0	5.0
Max. ambient temperature	[°C]	60.0	60.0	60.0	60.0
Repeat accuracy	[mm]	0.01	0.01	0.01	0.01

Main views

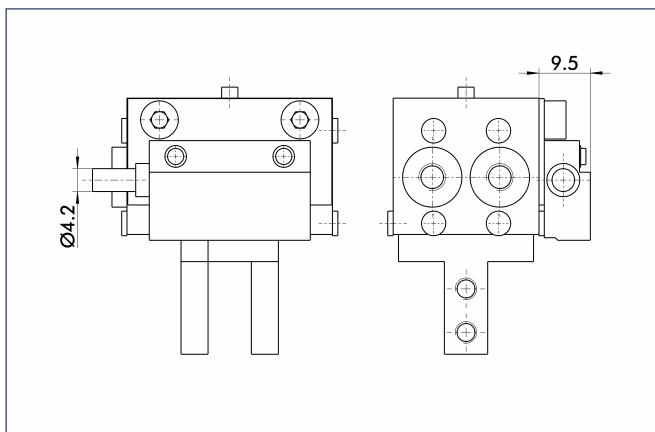


The drawing shows the gripper in the basic version with open jaws, the dimensions do not include the options described below.

① The SDV-P pressure maintenance valve can be used as a gripping force safety device (see "Accessories" catalog section).

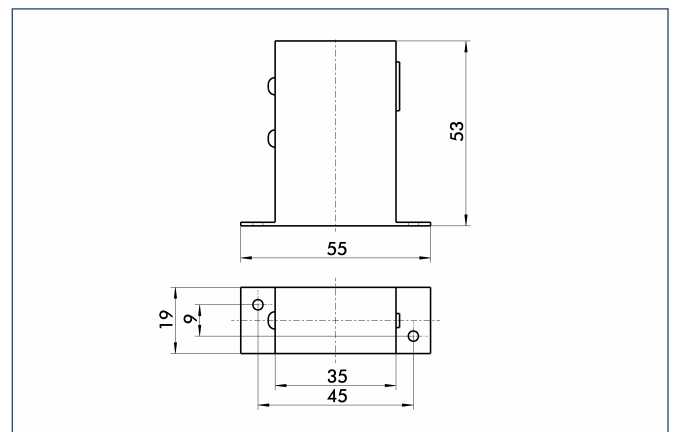
- A,a Main/direct connection, gripper opening
- B,b Main/direct connection, gripper closing
- ① Gripper connection
- ② Finger connection

Micro-photosensor



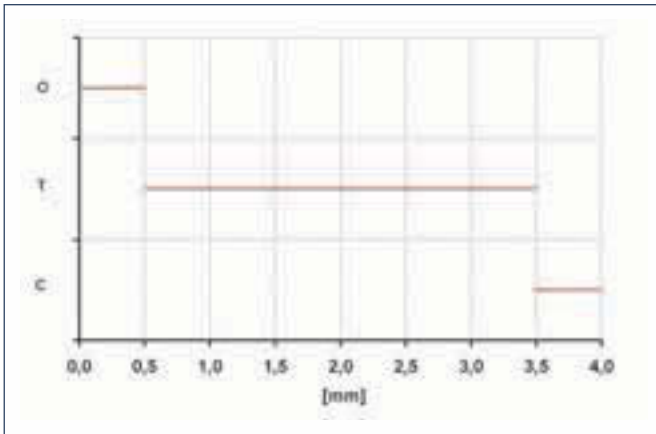
Grippers with integrated photosensor (FS) display two of three positions. (O = open, T = gripped, C = closed)

Amplifier



Dimensions of the amplifier for the photosensor (FS). The amplifier is included in the scope of delivery of FS grippers.

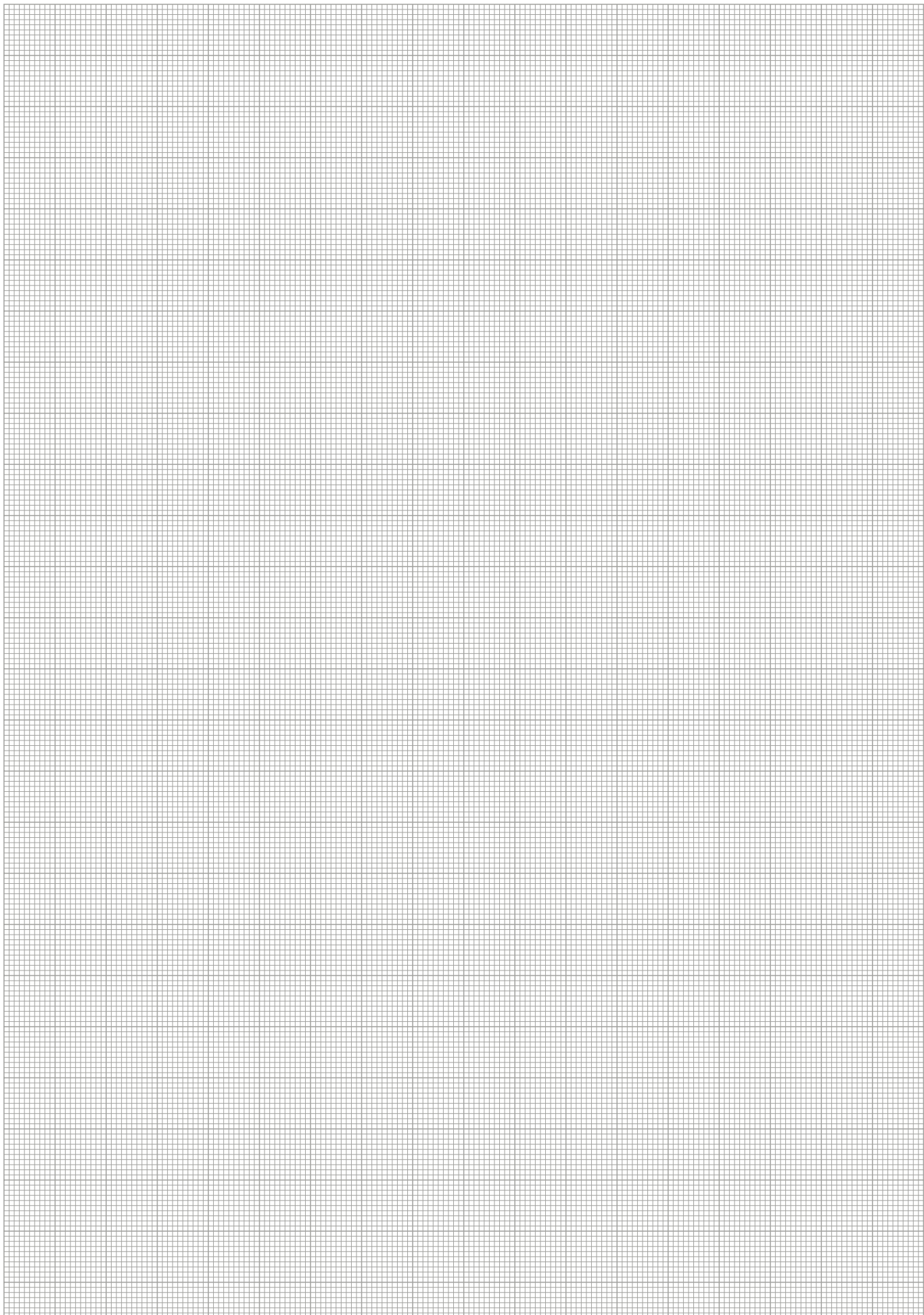
Monitoring positions



Sensor switching characteristics

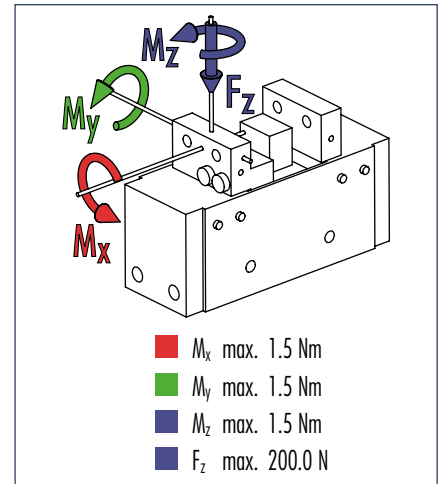


You can find more detailed information and individual parts of the above-mentioned accessories in the "Accessories" catalog section.





Finger load

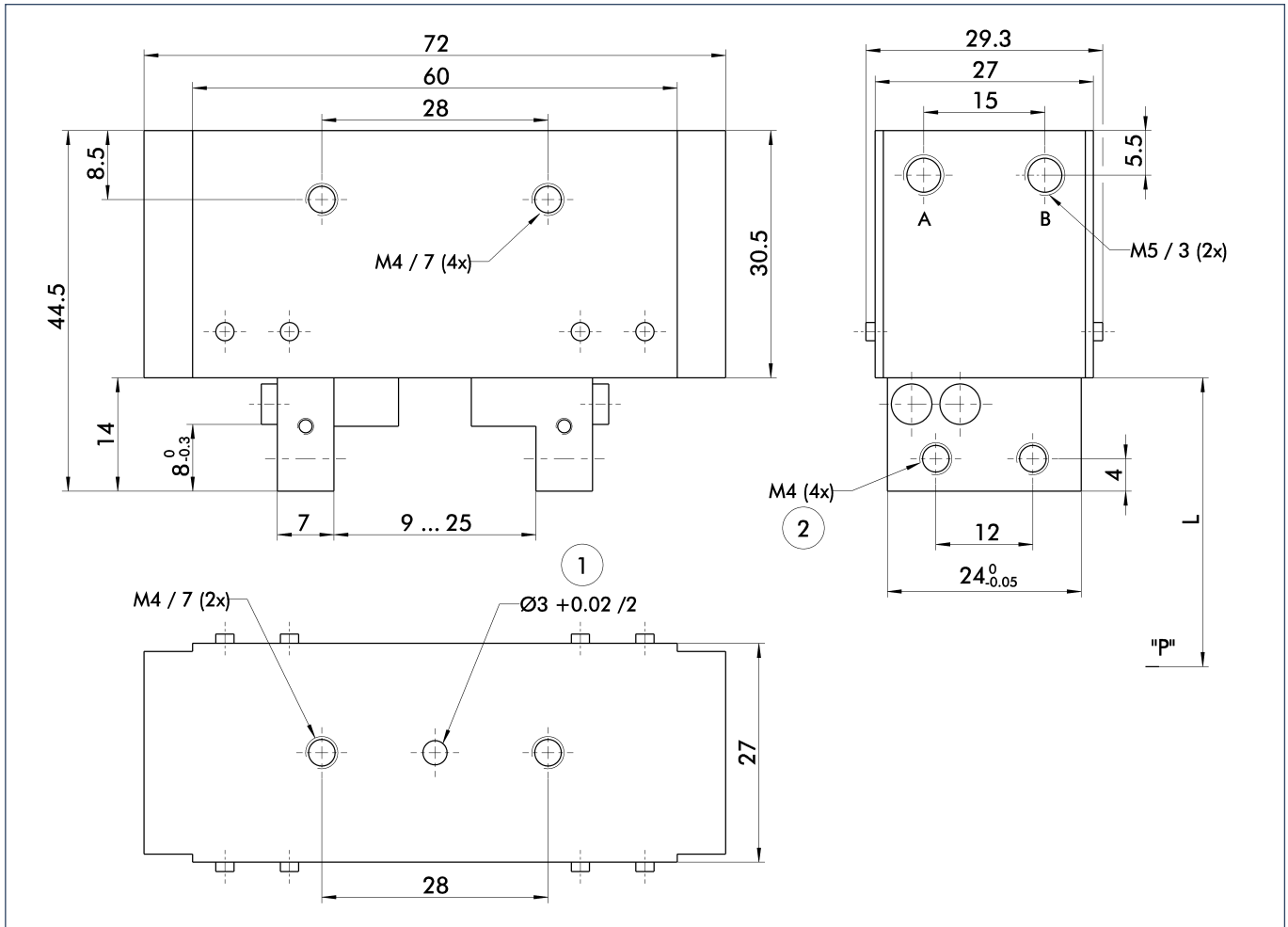


① Moments and forces apply per base jaw and may occur simultaneously. M_y may arise in addition to the moment generated by the gripping force itself. If the max. permitted finger weight is exceeded, it is imperative to throttle the air pressure so that the jaw movement occurs without any hitting or bouncing. Service life may be reduced.

Technical data

Description	RH 907	
ID	0360200	
Stroke per finger	[mm]	8.0
Closing force	[N]	80.0
Opening force	[N]	80.0
Weight	[kg]	0.17
Recommended workpiece weight	[kg]	0.4
Air consumption per double stroke	[cm ³]	2.0
Nominal pressure	[bar]	6.0
Minimum pressure	[bar]	2.0
Maximum pressure	[bar]	7.0
Closing time	[s]	0.17
Opening time	[s]	0.17
Max. permitted finger length	[mm]	20.0
Max. permitted weight per finger	[kg]	0.05
IP rating		30
Min. ambient temperature	[°C]	5.0
Max. ambient temperature	[°C]	60.0
Repeat accuracy	[mm]	0.01

Main views

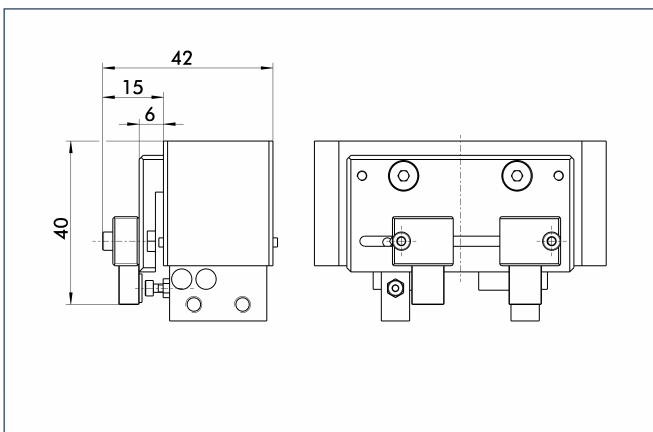


The drawing shows the gripper in the basic version with open jaws, the dimensions do not include the options described below.

- A,a Main/direct connection, gripper opening
- B,b Main/direct connection, gripper closing
- ① Gripper connection
- ② Finger connection

① The SDV-P pressure maintenance valve can be used as a gripping force safety device (see "Accessories" catalog section).

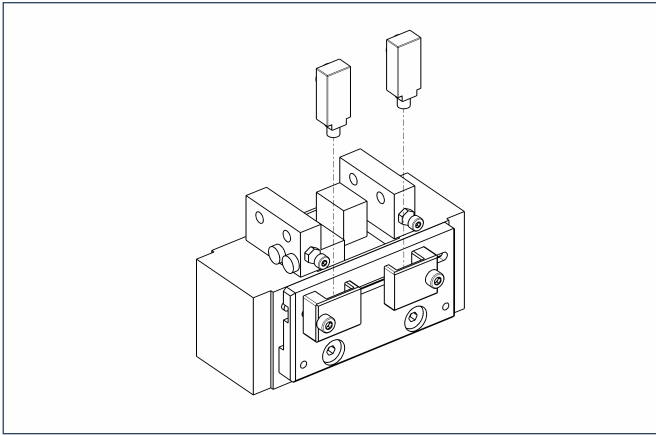
Mounting kit for proximity switch



The mounting kit consists of brackets, switch cams and the associated fastening materials. The proximity switches must be ordered separately.

Description	ID
AS-RH 907	0360206

Sensor system



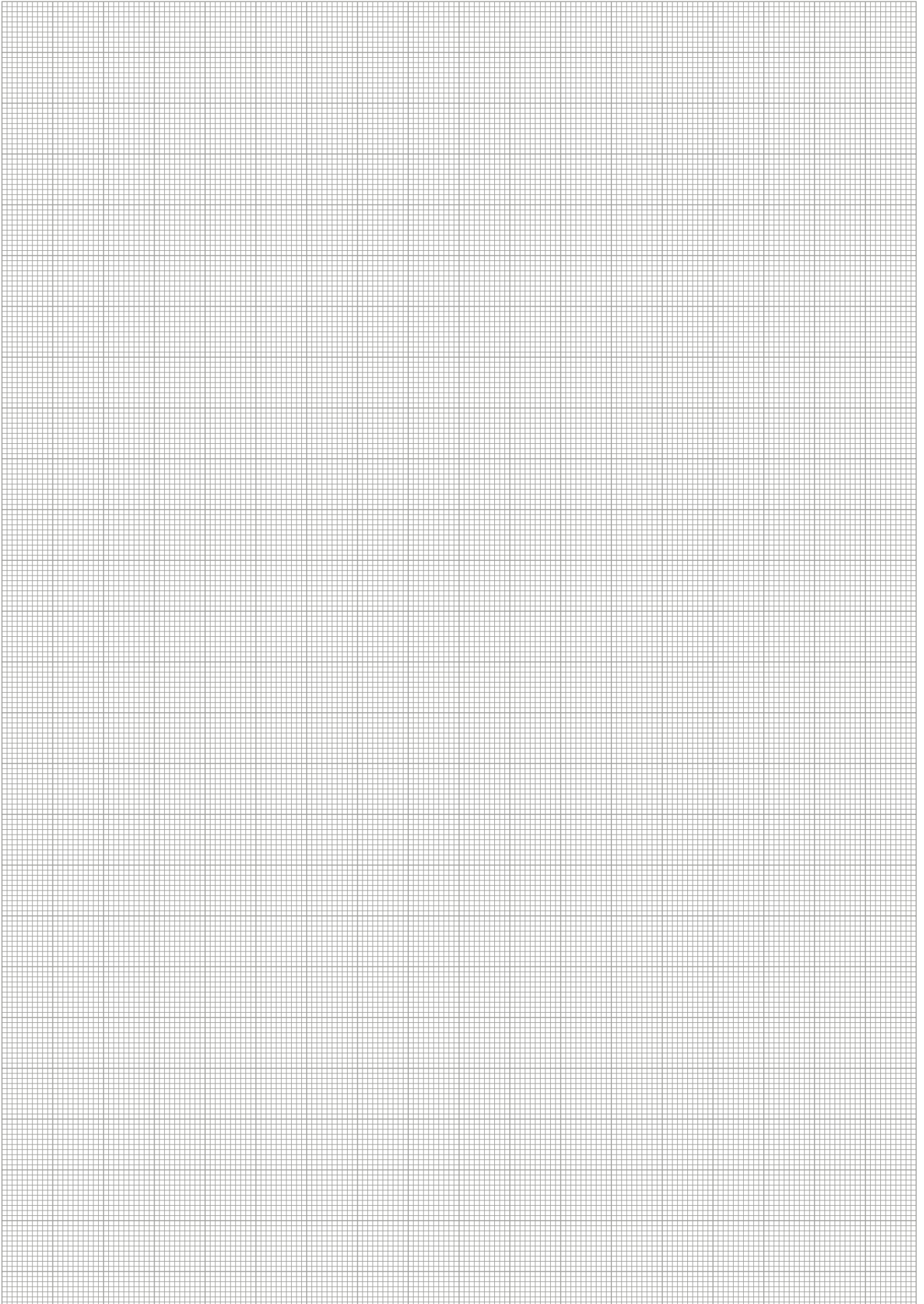
End position monitoring:

Inductive proximity switches, mounted with mounting kit

Description	ID	Recommended product
AS-RH 907	0360206	
IN 8/S-M12	0301581	
IN 8/S-M8	0301481	•
INK 8/S	9700052	

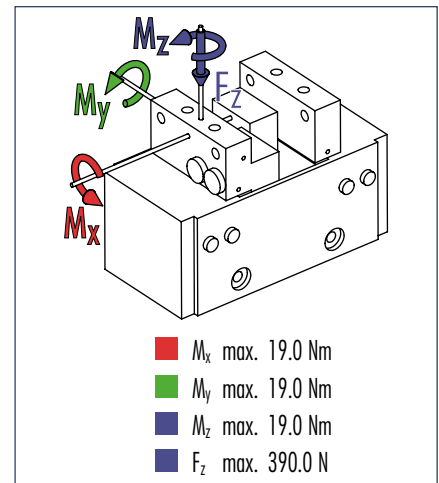


You can find more detailed information and individual parts of the above-mentioned accessories in the "Accessories" catalog section.





Finger load

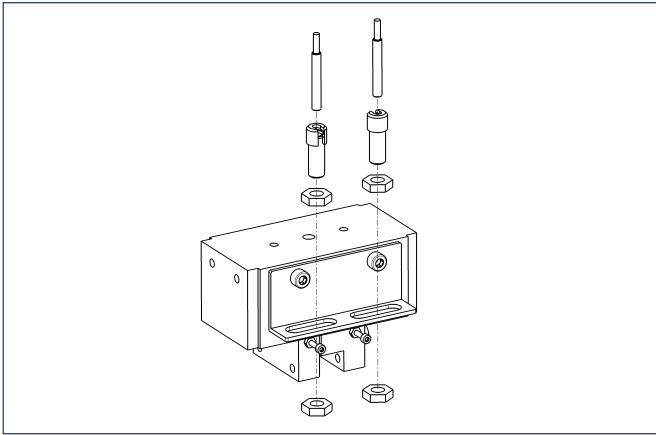


① Moments and forces apply per base jaw and may occur simultaneously. M_y may arise in addition to the moment generated by the gripping force itself. If the max. permitted finger weight is exceeded, it is imperative to throttle the air pressure so that the jaw movement occurs without any hitting or bouncing. Service life may be reduced.

Technical data

Description		RH 925	RH 925 PX
	ID	0360300	0360301
Stroke per finger	[mm]	12.0	12.0
Closing force	[N]	270.0	270.0
Opening force	[N]	270.0	270.0
Weight	[kg]	0.55	0.55
Recommended workpiece weight	[kg]	1.3	1.3
Air consumption per double stroke	[cm ³]	8.0	8.0
Nominal pressure	[bar]	6.0	6.0
Minimum pressure	[bar]	2.0	2.0
Maximum pressure	[bar]	7.0	7.0
Closing time	[s]	0.5	0.5
Opening time	[s]	0.5	0.5
Max. permitted finger length	[mm]	30.0	30.0
Max. permitted weight per finger	[kg]	0.08	0.08
IP rating		30	30
Min. ambient temperature	[°C]	5.0	5.0
Max. ambient temperature	[°C]	60.0	60.0
Repeat accuracy	[mm]	0.02	0.02

Sensor system



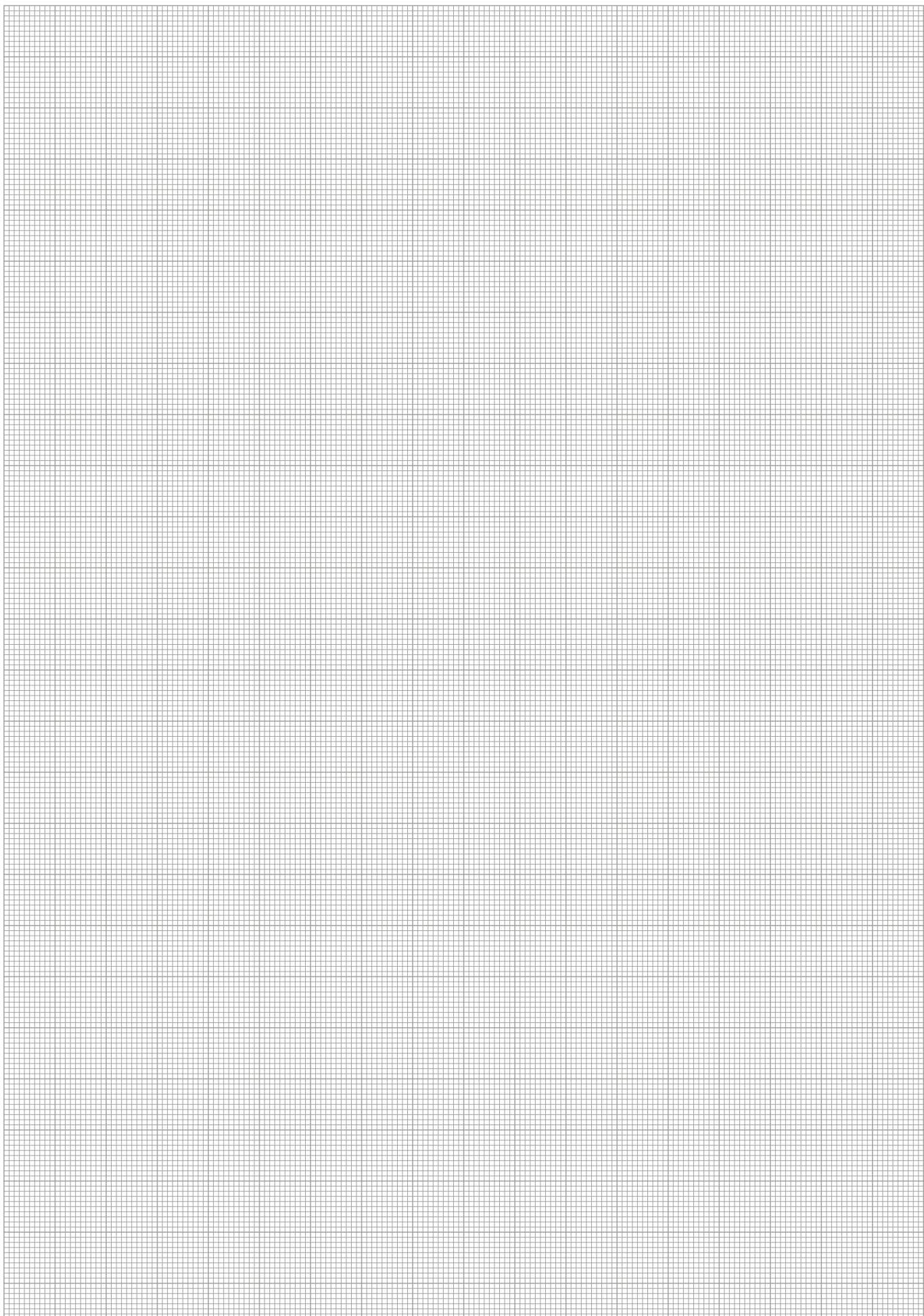
End position monitoring:

Inductive proximity switches, for direct mounting (PX only)

Description	ID	Recommended product
IN 50/S-M12	0301575	•
INK 50/S	0301560	

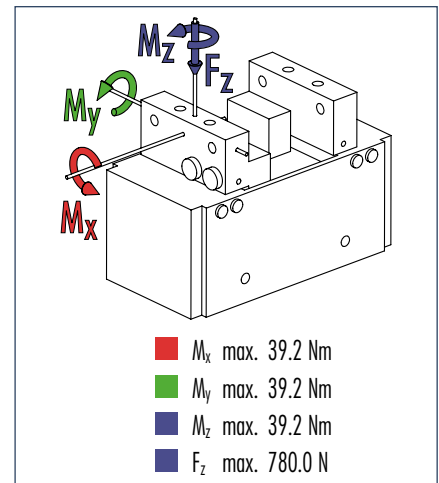


You can find more detailed information and individual parts of the above-mentioned accessories in the "Accessories" catalog section.





Finger load

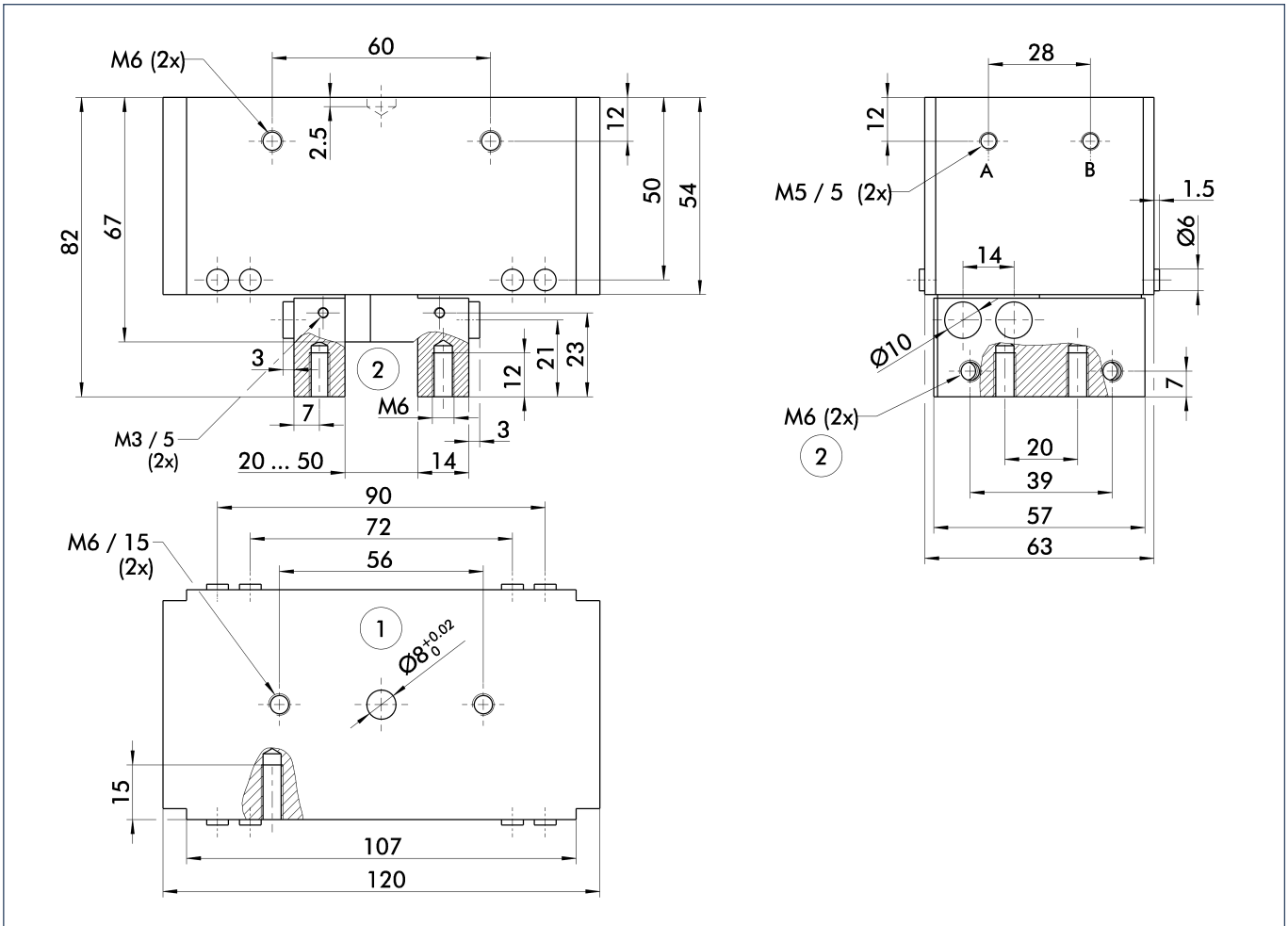


① Moments and forces apply per base jaw and may occur simultaneously. M_y may arise in addition to the moment generated by the gripping force itself. If the max. permitted finger weight is exceeded, it is imperative to throttle the air pressure so that the jaw movement occurs without any hitting or bouncing. Service life may be reduced.

Technical data

Description		RH 940	RH 940 PX
	ID	0360310	0360311
Stroke per finger	[mm]	15.0	15.0
Closing force	[N]	460.0	460.0
Opening force	[N]	460.0	460.0
Weight	[kg]	1.1	1.1
Recommended workpiece weight	[kg]	2.3	2.3
Air consumption per double stroke	[cm ³]	14.0	14.0
Nominal pressure	[bar]	6.0	6.0
Minimum pressure	[bar]	2.0	2.0
Maximum pressure	[bar]	7.0	7.0
Closing time	[s]	0.5	0.5
Opening time	[s]	0.5	0.5
Max. permitted finger length	[mm]	50.0	50.0
Max. permitted weight per finger	[kg]	0.13	0.13
IP rating		30	30
Min. ambient temperature	[°C]	5.0	5.0
Max. ambient temperature	[°C]	60.0	60.0
Repeat accuracy	[mm]	0.02	0.02

Main views

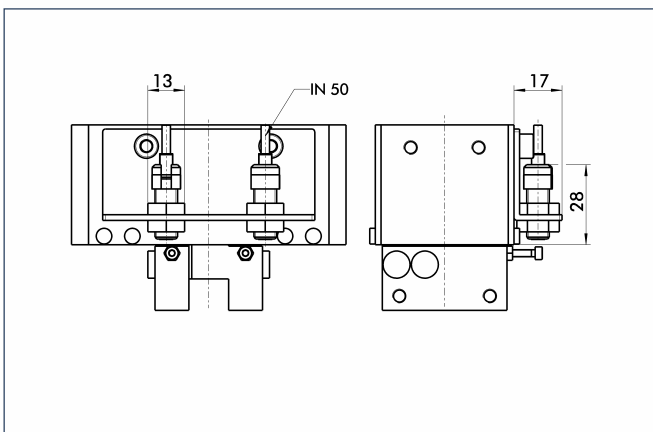


The drawing shows the gripper in the basic version with closed jaws, the dimensions do not include the options described below.

- A,a Main/direct connection, gripper opening
- B,b Main/direct connection, gripper closing
- ① Gripper connection
- ② Finger connection

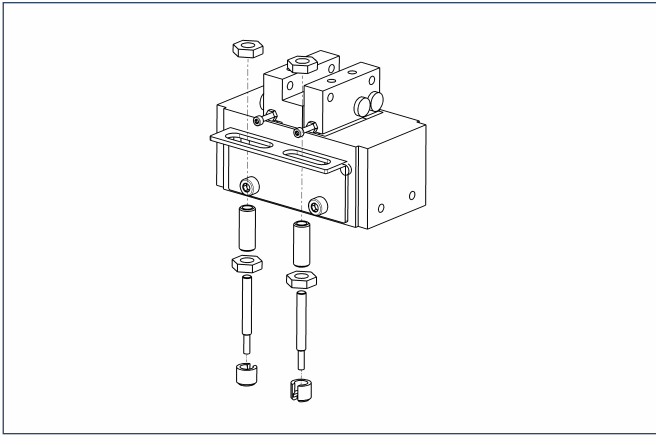
① The SDV-P pressure maintenance valve can be used as a gripping force safety device (see "Accessories" catalog section).

Proximity switch attachment



In the PX version, the mounting kit for the proximity switches is included in delivery.

Sensor system



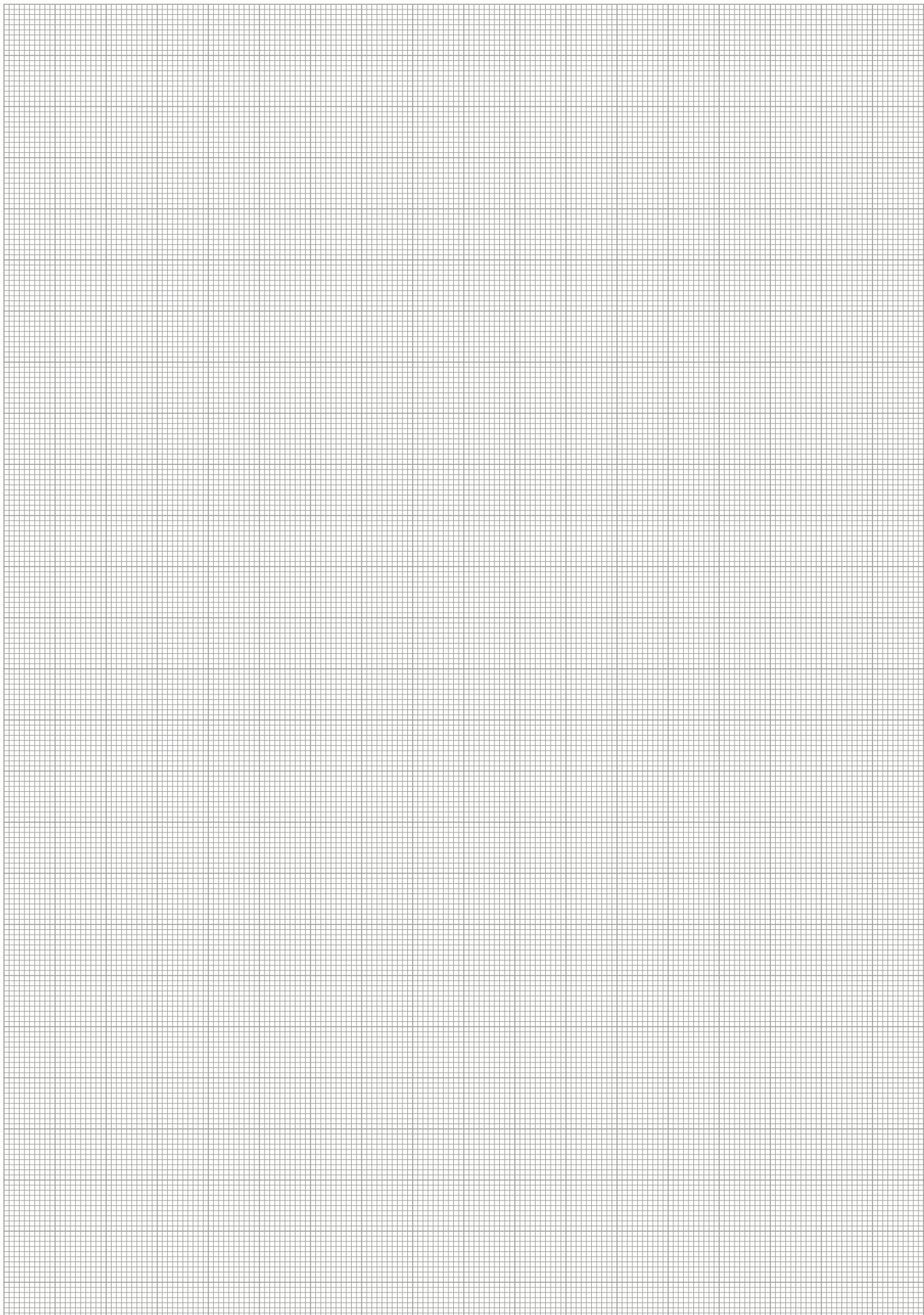
End position monitoring:

Inductive proximity switches, for direct mounting (PX only)

Description	ID	Recommended product
IN 50/S-M12	0301575	•
INK 50/S	0301560	

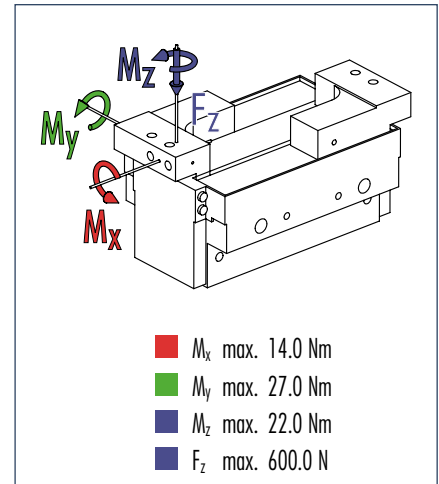


You can find more detailed information and individual parts of the above-mentioned accessories in the "Accessories" catalog section.





Finger load

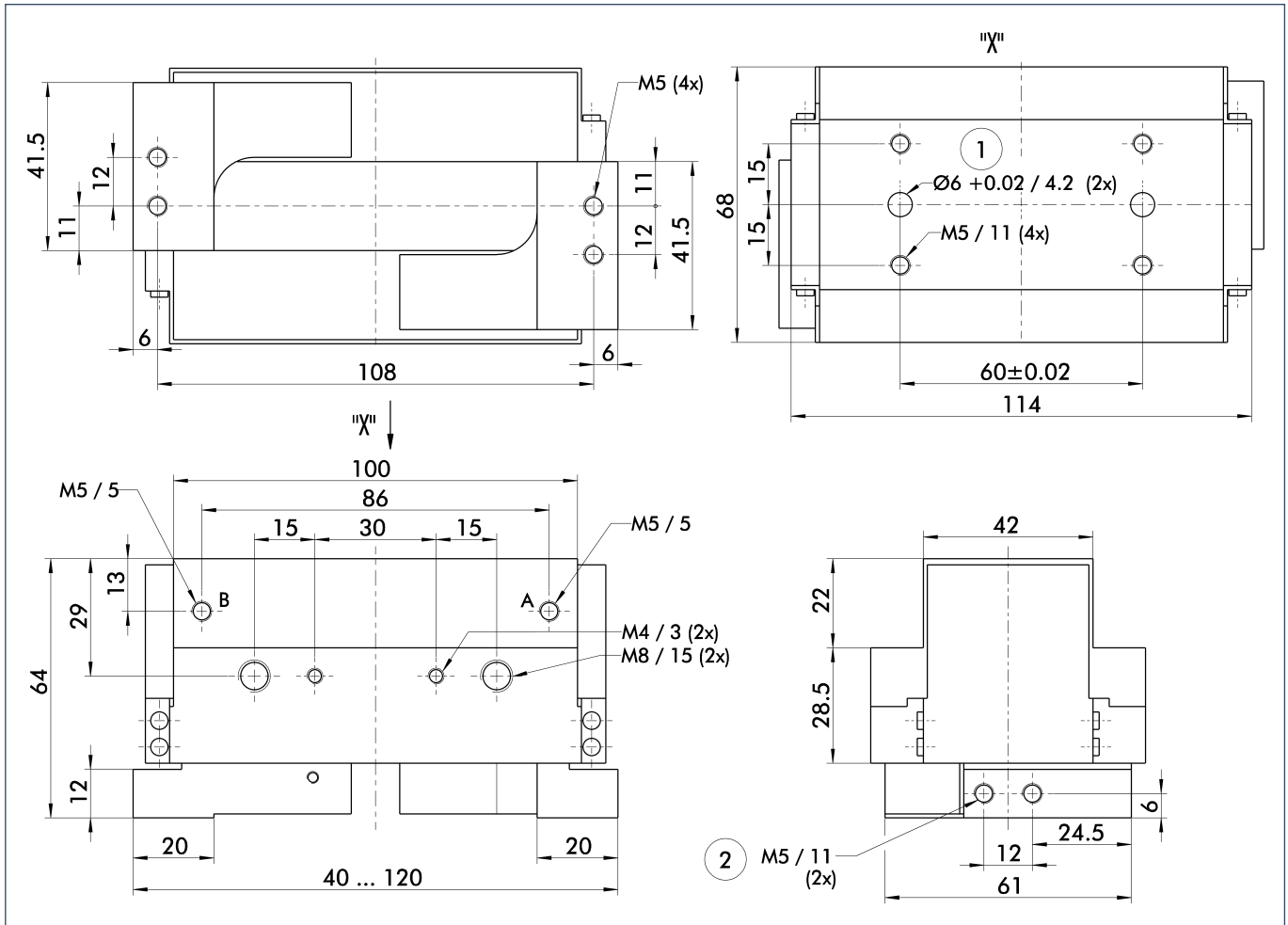


① Moments and forces apply per base jaw and may occur simultaneously. M_y may arise in addition to the moment generated by the gripping force itself. If the max. permitted finger weight is exceeded, it is imperative to throttle the air pressure so that the jaw movement occurs without any hitting or bouncing. Service life may be reduced.

Technical data

Description		RH 9010
	ID	0360141
Stroke per finger	[mm]	40.0
Closing force	[N]	150.0
Opening force	[N]	150.0
Weight	[kg]	0.89
Recommended workpiece weight	[kg]	0.75
Air consumption per double stroke	[cm ³]	8.0
Nominal pressure	[bar]	6.0
Minimum pressure	[bar]	2.0
Maximum pressure	[bar]	7.0
Closing time	[s]	0.5
Opening time	[s]	0.5
Max. permitted finger length	[mm]	100.0
Max. permitted weight per finger	[kg]	0.15
IP rating		30
Min. ambient temperature	[°C]	5.0
Max. ambient temperature	[°C]	60.0
Repeat accuracy	[mm]	0.02

Main views

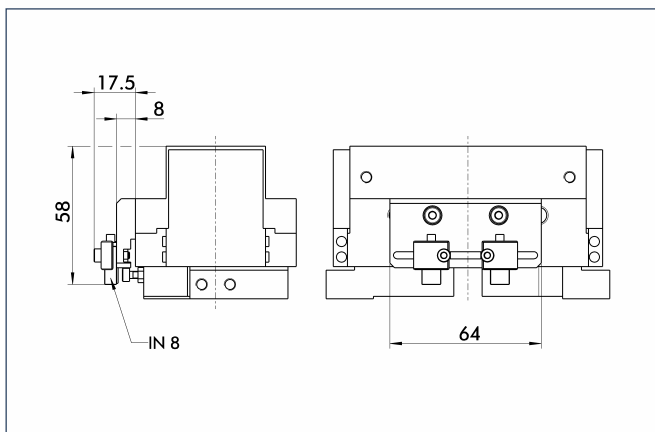


The drawing shows the gripper in the basic version with open jaws, the dimensions do not include the options described below.

- A,a Main/direct connection, gripper opening
- B,b Main/direct connection, gripper closing
- ① Gripper connection
- ② Finger connection

① The SDV-P pressure maintenance valve can be used as a gripping force safety device (see "Accessories" catalog section).

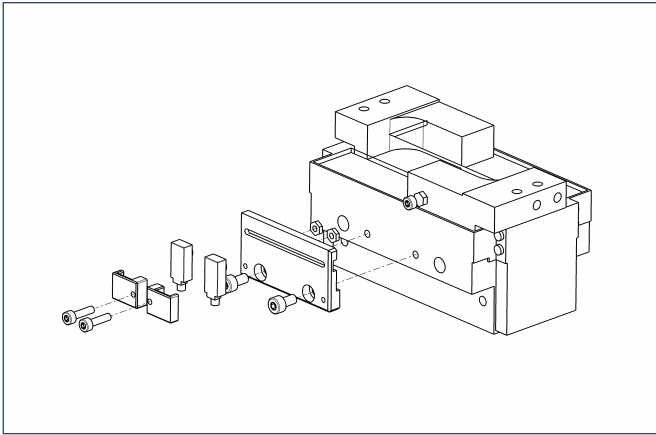
Mounting kit for proximity switch



The mounting kit consists of brackets, switch cams and the associated mounting materials. The proximity switches must be ordered separately.

Description	ID
AS-RH 9010	0360207

Sensor system



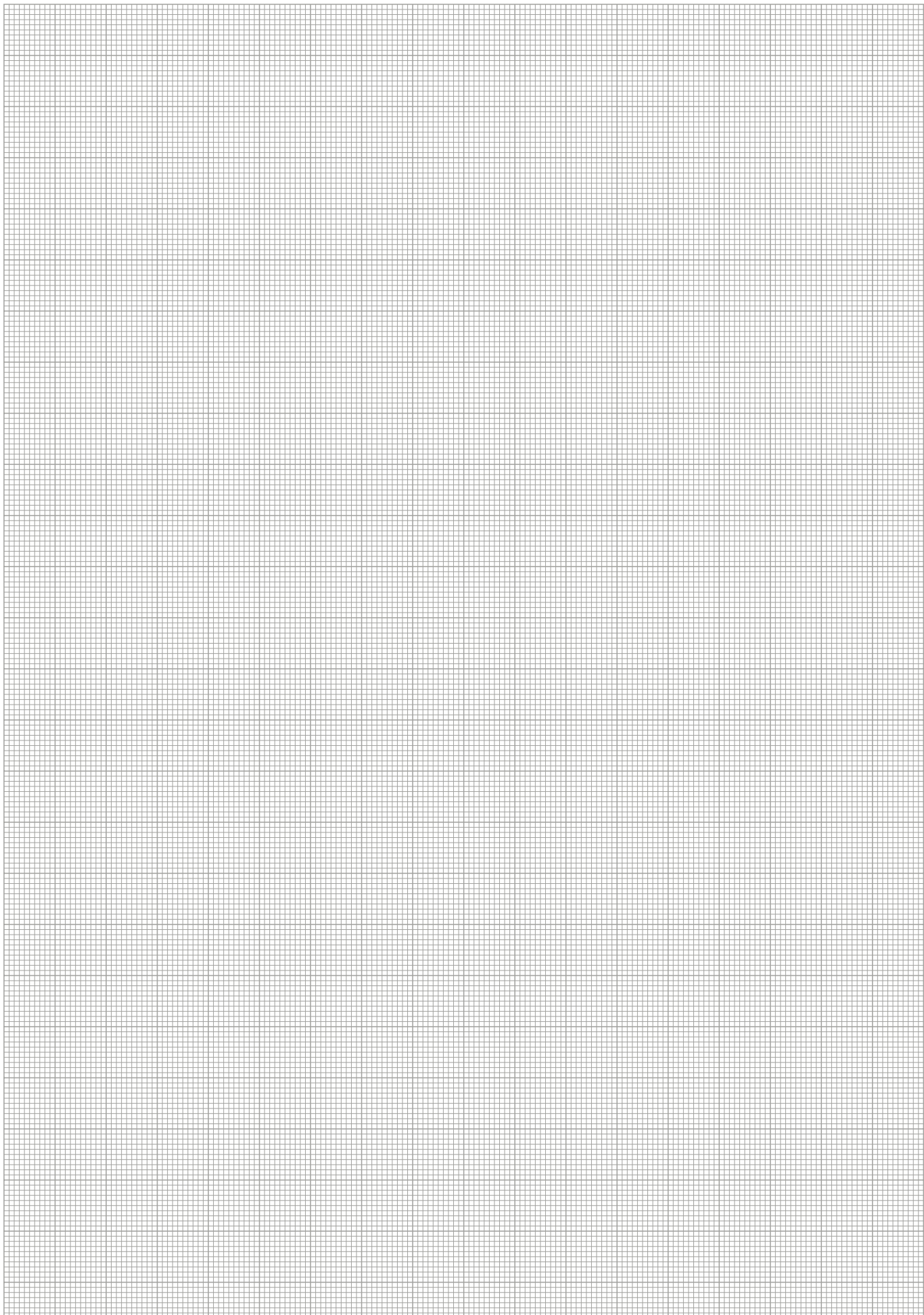
End position monitoring:

Inductive proximity switches, mounted with mounting kit

Description	ID	Recommended product
AS-RH 9010	0360207	
IN 8/S-M12	0301581	
IN 8/S-M8	0301481	•
INK 8/S	9700052	

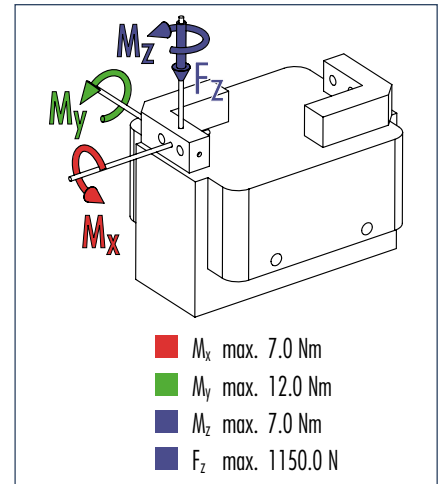


You can find more detailed information and individual parts of the above-mentioned accessories in the "Accessories" catalog section.





Finger load

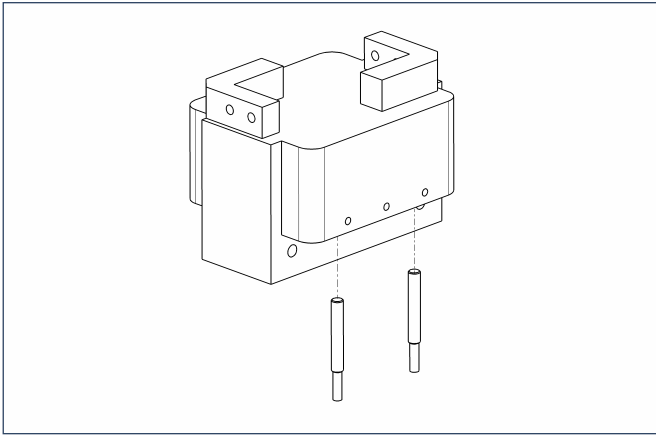


① Moments and forces apply per base jaw and may occur simultaneously. M_y may arise in addition to the moment generated by the gripping force itself. If the max. permitted finger weight is exceeded, it is imperative to throttle the air pressure so that the jaw movement occurs without any hitting or bouncing. Service life may be reduced.

Technical data

Description	ID	RH 918
		0360140
Stroke per finger	[mm]	30.0
Closing force	[N]	100.0
Opening force	[N]	100.0
Weight	[kg]	0.48
Recommended workpiece weight	[kg]	0.5
Air consumption per double stroke	[cm ³]	16.0
Nominal pressure	[bar]	6.0
Minimum pressure	[bar]	2.0
Maximum pressure	[bar]	7.0
Closing time	[s]	0.4
Opening time	[s]	0.4
Max. permitted finger length	[mm]	65.0
Max. permitted weight per finger	[kg]	0.12
IP rating		30
Min. ambient temperature	[°C]	5.0
Max. ambient temperature	[°C]	60.0
Repeat accuracy	[mm]	0.02

Sensor system

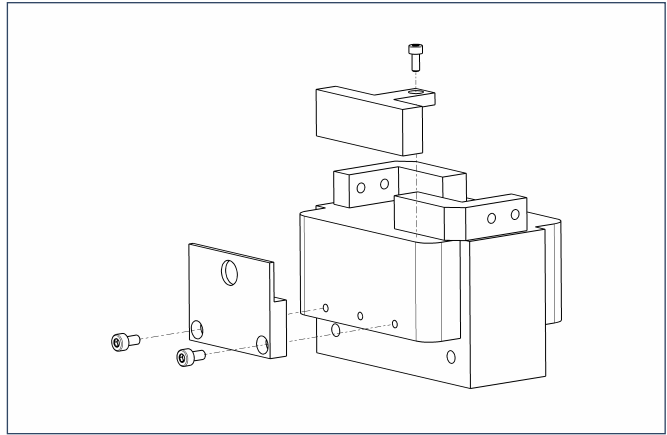


End position monitoring:

Inductive proximity switches, for direct mounting

Description	ID	Recommended product
IN 40/S-M12	0301574	
IN 40/S-M8	0301474	•
INK 40/S	0301555	

- ① Two sensors (NO contacts) are required for each gripper, plus extension cables as an option.



Measuring system:

FPS position monitor

Description	ID
AS-RH 918	0301718
FPS-A5	0301802
FPS-F5	0301805
FPS-F5 T	0301807
FPS-S 13	0301705

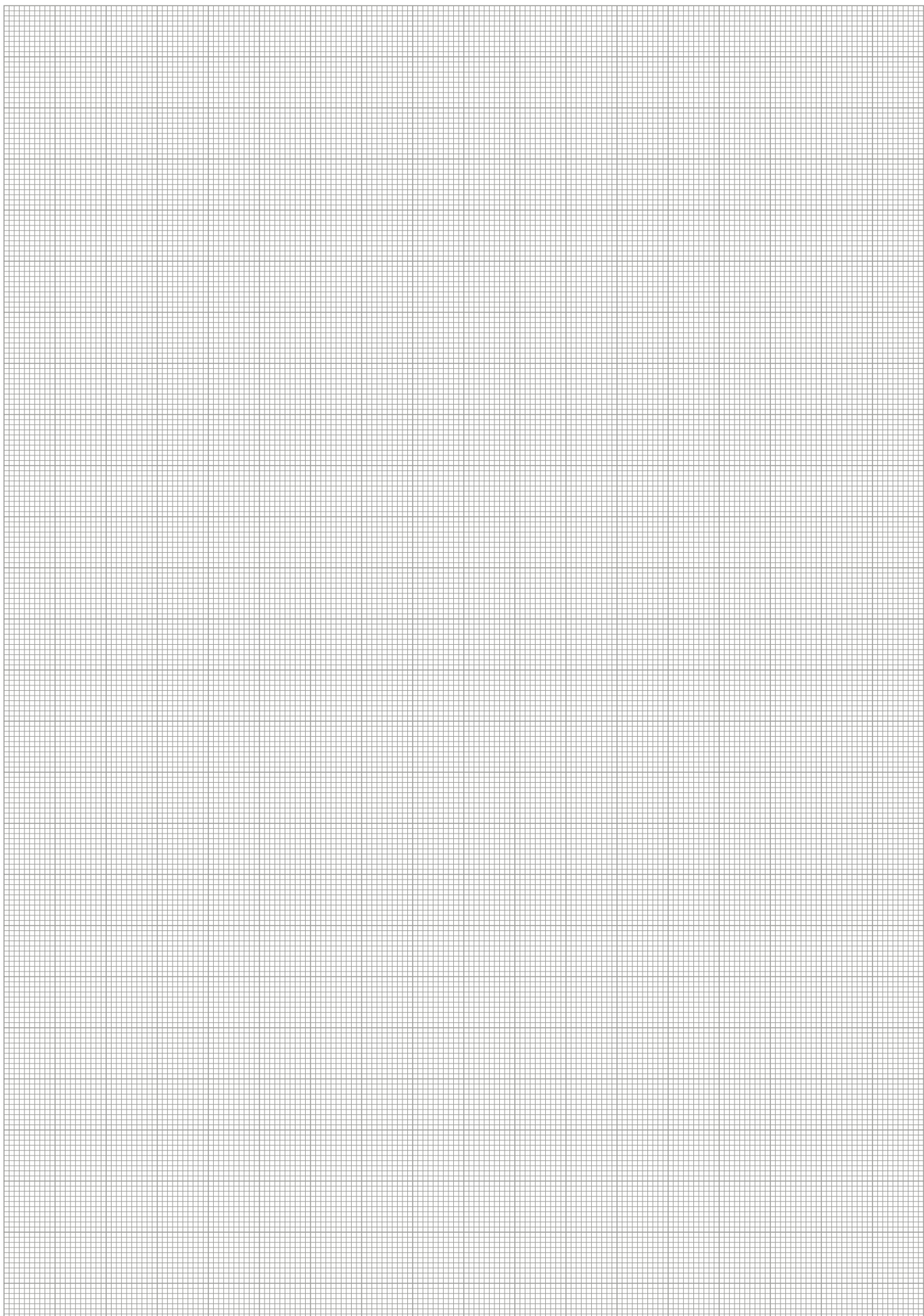
When using an FPS system, an FPS sensor (FPS-S) and an electronic processor (FPS-F5/ F5 T or A5) are required for each gripper as well as a mounting kit (AS), if listed. Cable extensions (KV) are available as options in the "Accessories" catalog section.

Extension cables for proximity switches/magnetic switches

Description	ID
GK 3-M8	0301622
KV 10-M12	0301596
KV 10-M8	0301496
KV 20-M12	0301597
KV 20-M8	0301497
KV 3-M12	0301595
KV 3-M8	0301495
W 3-M12	0301503
W 5-M12	0301507
WK 3-M8	0301594
WK 5-M8	0301502

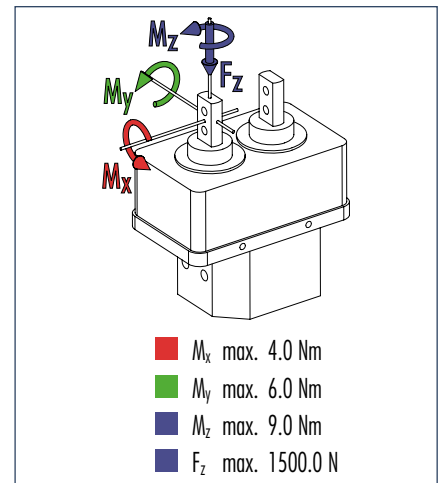


You can find more detailed information and individual parts of the above-mentioned accessories in the "Accessories" catalog section.





Finger load



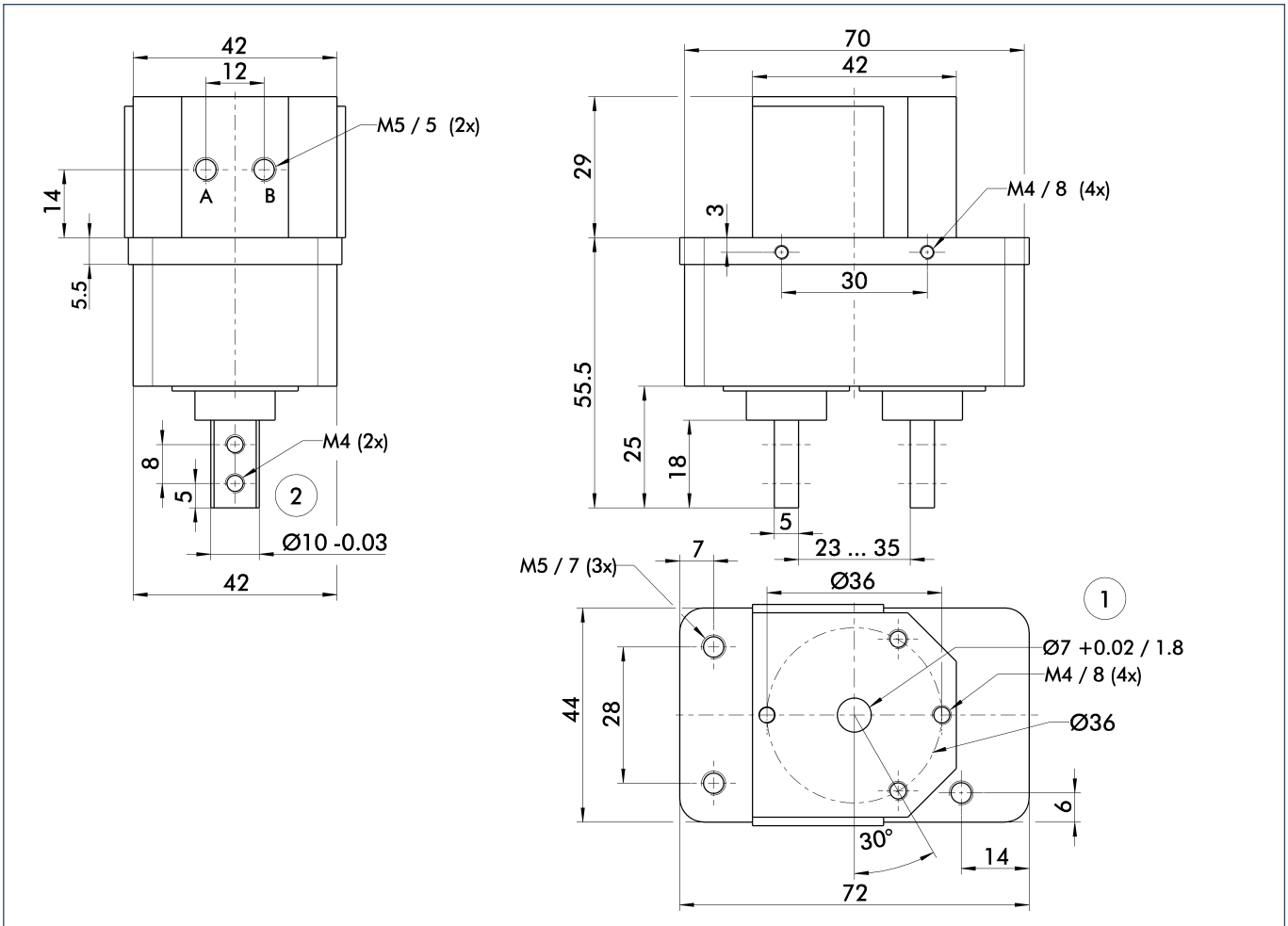
① Moments and forces apply per base jaw and may occur simultaneously. M_y may arise in addition to the moment generated by the gripping force itself. If the max. permitted finger weight is exceeded, it is imperative to throttle the air pressure so that the jaw movement occurs without any hitting or bouncing. Service life may be reduced.

Technical data

Description		RH 806 KP	RH 806 KP PX OT5	RH 806 KP PX OCS	RH 806 KP PX TCS
	ID	0360178	0360179	0360180	0360181
Stroke per finger	[mm]	6.0	6.0	6.0	6.0
Closing force	[N]	65.0	65.0	65.0	65.0
Opening force	[N]	65.0	65.0	65.0	65.0
Weight	[kg]	0.36	0.36	0.36	0.36
Recommended workpiece weight	[kg]	0.325	0.325	0.325	0.325
Air consumption per double stroke	[cm ³]	10.0	10.0	10.0	10.0
Nominal pressure	[bar]	6.0	6.0	6.0	6.0
Minimum pressure	[bar]	2.0	2.0	2.0	2.0
Maximum pressure	[bar]	7.0	7.0	7.0	7.0
Closing time	[s]	0.13	0.13	0.13	0.13
Opening time	[s]	0.1	0.1	0.1	0.1
Max. permitted finger length	[mm]	50.0	50.0	50.0	50.0
Max. permitted weight per finger	[kg]	0.07	0.07	0.07	0.07
IP rating		30	30	30	30
Min. ambient temperature	[°C]	5.0	5.0	5.0	5.0
Max. ambient temperature	[°C]	60.0	60.0	60.0	60.0
Repeat accuracy	[mm]	0.02	0.02	0.02	0.02

Grippers with integrated sensor (PX) display two of three positions. (O = open, T = gripped, C = closed). The power voltage is 12 VDC .. 24 VDC at $I_{max} = 17$ mA. The output is PNP-switching with max. 24 V and 100 mA DC. The switching time is max. 35×10^{-6} s.

Main views

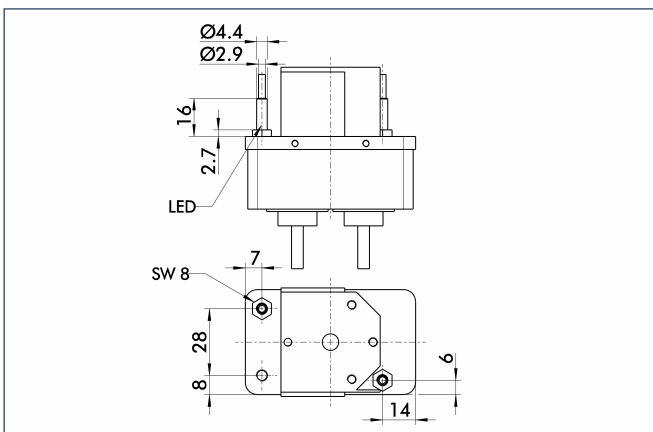


The drawing shows the gripper in the basic version with closed jaws, the dimensions do not include the options described below.

- A,a Main/direct connection, gripper opening
- B,b Main/direct connection, gripper closing
- ① Gripper connection
- ② Finger connection

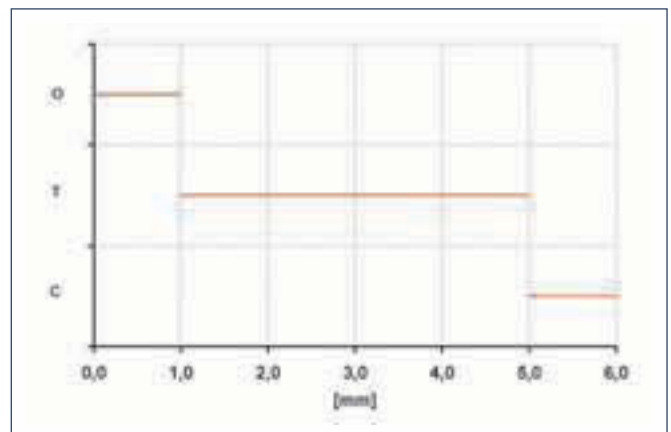
① The SDV-P pressure maintenance valve can also be used (see "Accessories" catalog section) for I.D. or O.D. gripping as an alternative or in addition to the spring-loaded, mechanical gripping force safety device.

Proximity switch attachment



In the PX version, the assembly material is included with the sensor.

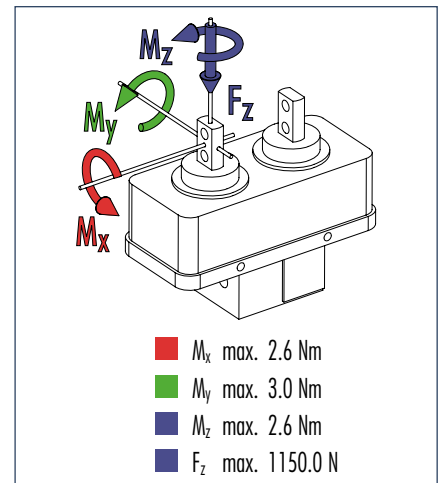
Monitoring positions



Sensor switching characteristics



Finger load



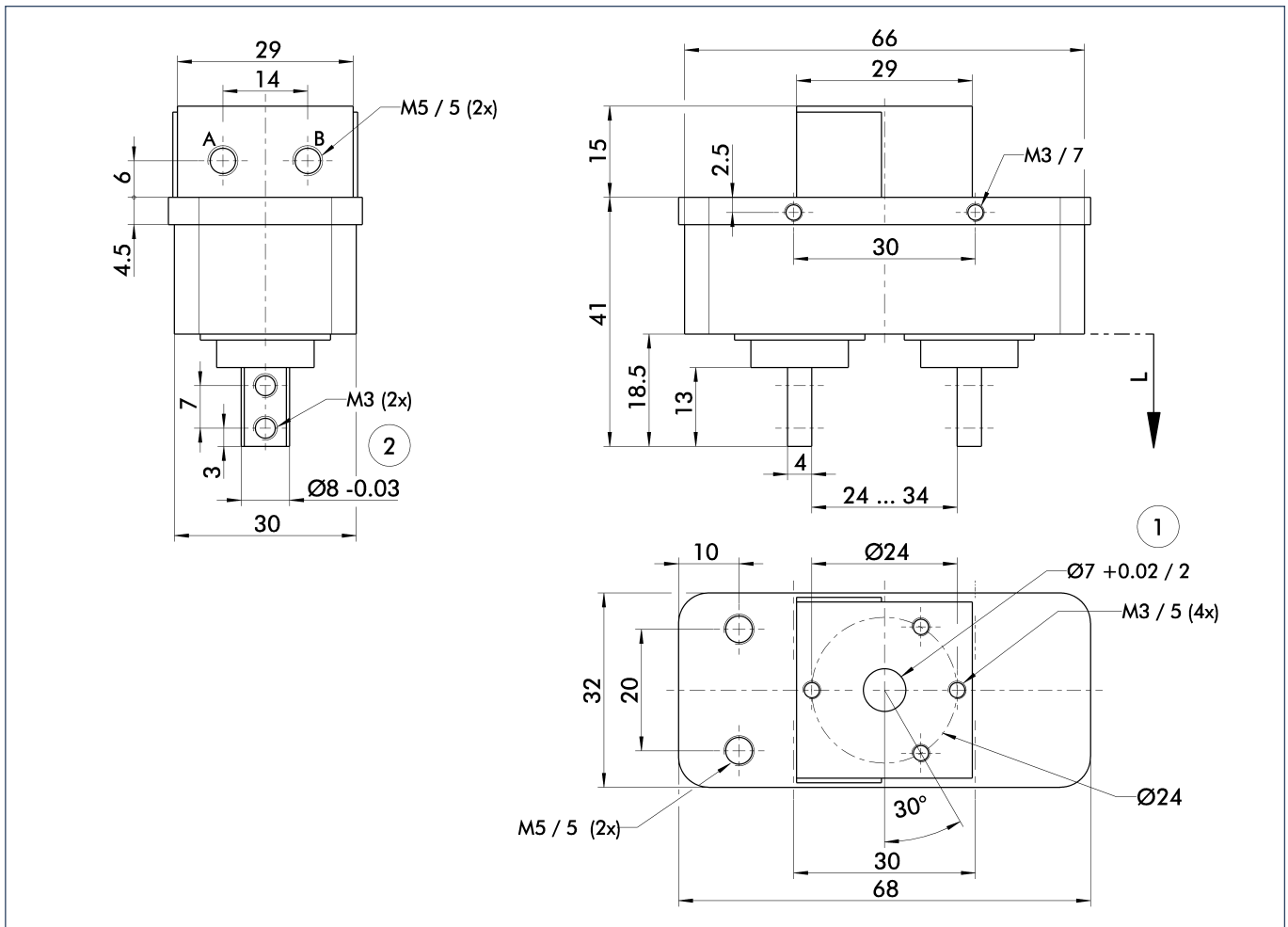
① Moments and forces apply per base jaw and may occur simultaneously. M_y may arise in addition to the moment generated by the gripping force itself. If the max. permitted finger weight is exceeded, it is imperative to throttle the air pressure so that the jaw movement occurs without any hitting or bouncing. Service life may be reduced.

Technical data

Description		RH 801 KP	RH 801 KP PX 05	RH 801 KP PX T5	RH 801 KP PX C5
	ID	0360174	0360175	0360176	0360177
Stroke per finger	[mm]	5.0	5.0	5.0	5.0
Closing force	[N]	23.0	23.0	23.0	23.0
Opening force	[N]	23.0	23.0	23.0	23.0
Weight	[kg]	0.15	0.15	0.15	0.15
Recommended workpiece weight	[kg]	0.115	0.115	0.115	0.115
Air consumption per double stroke	[cm ³]	2.0	2.0	2.0	2.0
Nominal pressure	[bar]	6.0	6.0	6.0	6.0
Minimum pressure	[bar]	2.0	2.0	2.0	2.0
Maximum pressure	[bar]	7.0	7.0	7.0	7.0
Closing time	[s]	0.13	0.13	0.13	0.13
Opening time	[s]	0.1	0.1	0.1	0.1
Max. permitted finger length	[mm]	25.0	25.0	25.0	25.0
Max. permitted weight per finger	[kg]	0.05	0.05	0.05	0.05
IP rating		30	30	30	30
Min. ambient temperature	[°C]	5.0	5.0	5.0	5.0
Max. ambient temperature	[°C]	60.0	60.0	60.0	60.0
Repeat accuracy	[mm]	0.02	0.02	0.02	0.02

Grippers with integrated sensor (PX) display one of three positions. (O = open, T = gripped, C = closed). The power voltage is 12 VDC .. 24 VDC at $I_{max} = 17$ mA. The output is PNP-switching with max. 24 V and 100 mA DC. The switching time is max. 35×10^{-5} s.

Main views

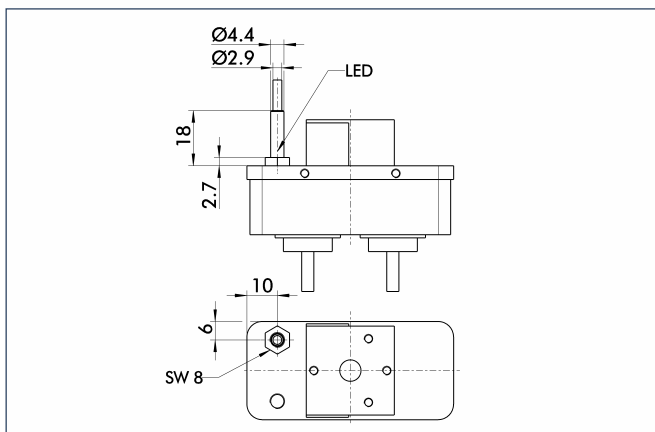


The drawing shows the gripper in the basic version with closed jaws, the dimensions do not include the options described below.

- A,a Main/direct connection, gripper opening
- B,b Main/direct connection, gripper closing
- ① Gripper connection
- ② Finger connection

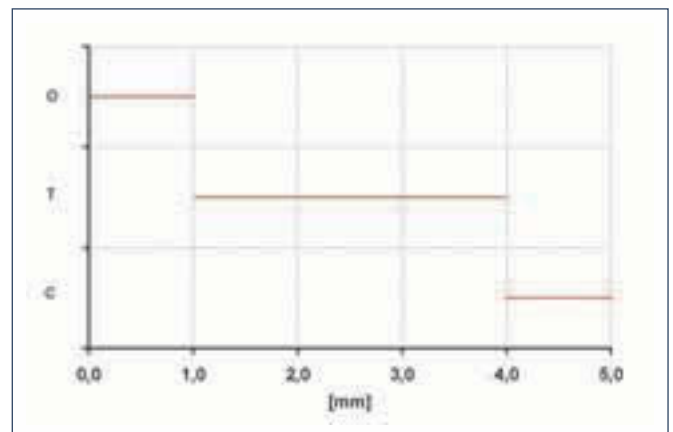
① The SDV-P pressure maintenance valve can be used as a gripping force safety device (see "Accessories" catalog section).

Proximity switch attachment



In the PX version, the assembly material is included with the sensor.

Monitoring positions



Sensor switching characteristics